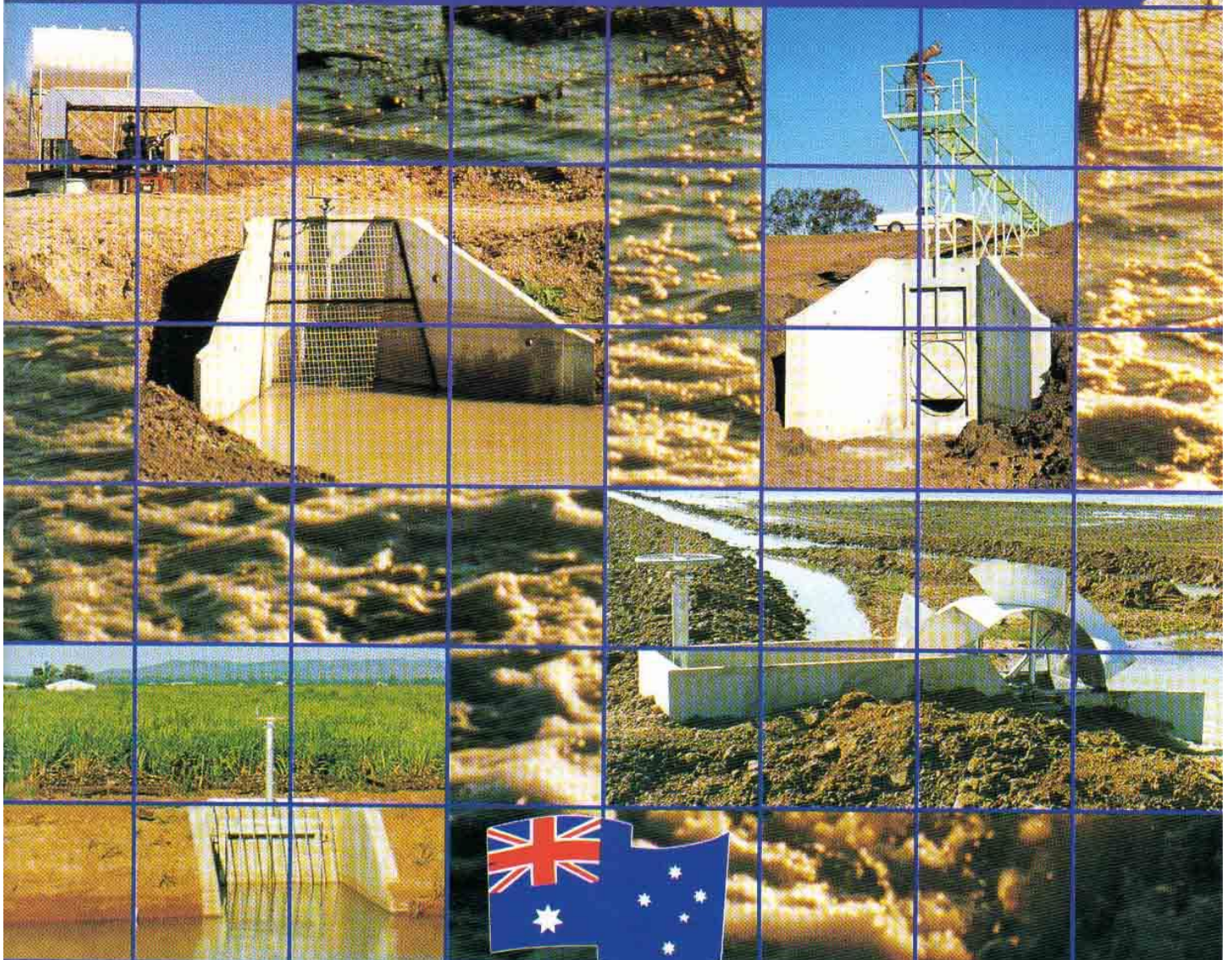




Batescrew Irrigation Gate Valves & Penstocks.



**Leading the way in productive
water control.**

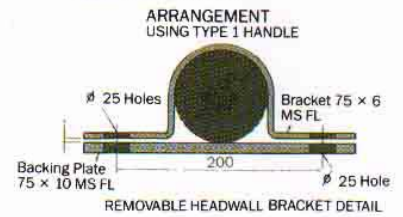
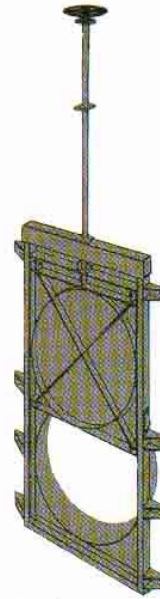
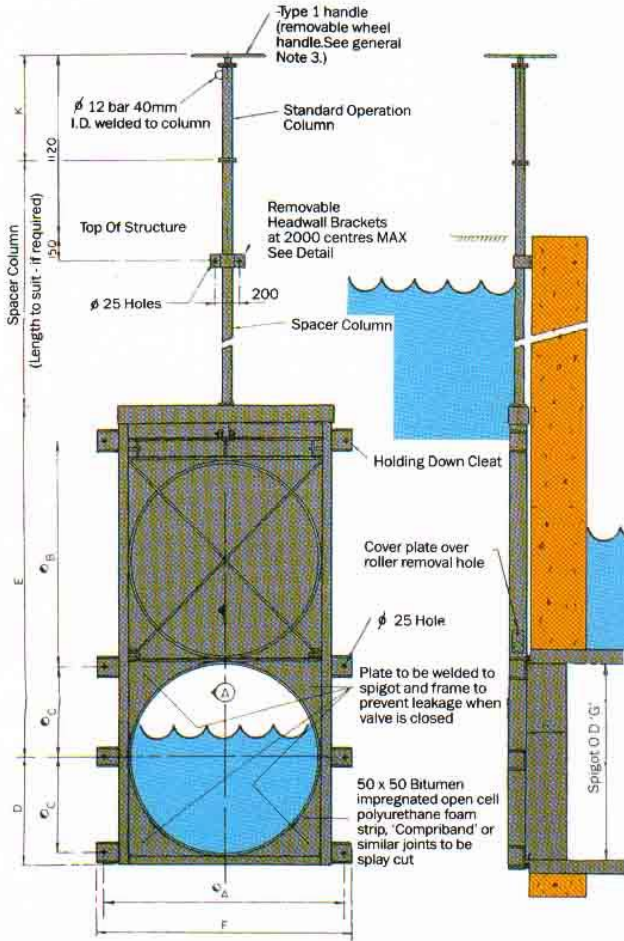
Batescrew Pumps and Valves Australia is a well accepted designer and manufacturer of a proven range of cost efficient Irrigation Gate Valves and Penstocks.

Batescrew Irrigation Gate Valves & Penstocks.

The Company's aim is to remain a leader in this field by designing and installing equipment characterised by optimum field performance and low maintenance requirements.

Batescrew is family owned and operated with around four decades experience in irrigation equipment.

We began manufacturing Gate Valves and Penstocks to provide a low cost alternative to high priced cast iron valves.



Headwall-type Valve Dimensions

Nominal Gate Diameter		300	375	450	525	600	675	750	900	1050	1200	1500
Bolt Hole Locations	A	480	560	660	740	820	890	960	1140	1320	1470	1820
	B	335	425	515	600	685	780	875	1055	1250	1415	1790
	C	140	175	215	250	285	325	365	440	520	590	745
Overall Dimensions	D	190	225	265	300	335	375	415	490	570	640	795
	E	770	875	995	1101	1205	1325	1445	1670	1910	2120	2585
	G	555	635	735	815	895	965	1035	1215	1395	1545	1895
Spigot	G	280	350	430	500	570	650	730	880	1040	1180	1490
	H	150	150	150	150	150	150	150	150	150	150	150
Std Operation Colm	K	530	600	680	750	820	900	980	1130	1290	1430	1740

Headwall Gate Valve



Batescrew Irrigation Gate Valves & Penstocks.

The Product

Batescrew Gate Valves and Penstocks are for use attached to concrete pipes ranging in diameter from 300-1800mm in applications with up to 6m of static head on either side of the valve.

Both units allow accurate channel water management in fresh and salt water situations.

Applications include:

- Irrigated primary production
- Oil spillway control for major fuel depots
- Earthen irrigation storages
- Flood mitigation

User options include:

- Seating headwater pressure forces the valve closed
- Unseating headwater pressure tends to force the valve 'off' the seat

Batescrew Gate Valves and Penstocks can be installed using one of the three following methods:

- BOLTED** on to a headwall using chemical anchors or loxins. This is the standard method used by Government authorities in flood mitigation. The complete valve can be removed for major maintenance or the valve door can be removed for minor service. This method is suitable for a large range of headwall aperture sizes.
- GROUTED** on to the ends of concrete pipes eliminating the cost on headwall installation. This method is used by many farmers throughout Australia.

For this purpose the outside diameter of the gate valve spigot is 50mm smaller than the inside pipe diameter to accommodate the grout.

- FLANGED** to steel or concrete lined pipes. When flanged penstocks are used they can be fabricated to suit a specific pipe diameter. Alternatively Batescrew can supply a loose matching flange to weld on to the end of the pipe.

Batescrew Gate Valves and Penstocks are fabricated using 6mm plate which is hot dip galvanised and can be supplied with coal tar epoxy coating for extreme conditions.

The doors are wedged against a stainless steel face and can withstand two directional water pressure via a watertight stainless-steel-to-rubber seal.

The doors are supported by four bronze rollers mounted on stainless steel shafts.

The gate control features a jam resistant square thread which is completely enclosed in a dustproof tube.

The thread runs inside a bronze nut which is rotated by a handwheel.

The load is supported by a ball thrust bearing which facilitates easy operation of the gate.

As there is no spindle obstruction above the hand wheel, an operator can employ a full 360 degree wheel rotation for faster and easier operation.

Extension columns are available to suit a wide range of depth requirements.

Features & Options

- Standard construction finish is hot dip galvanising
- Coal Tar Epoxy finish option for harsh operating environments
- Corrosion resistant rubber to stainless steel seating
- Approved by relevant State Government authorities
- Non rising spindle
- Seating/Unseating pressure sealing in high static head applications
- Competitively priced
- Fits 300-1800mm pipes
- Square valves available where required
- Easily elevated control spindle for high rise and fall applications
- Valve key controlled removable hand wheel
- Geared reduction chain drive
- Hydraulic cylinder gate operation
- 'Rotork' actuator
- Stainless steel 316 and 304 grades
- Spindle operates through a fully enclosed grease lubricated nut



Batescrew Irrigation Gate Valves & Penstocks.



Button Gate manufactured for specific requirements. This valve seals underground pipe water flowing into farm open flume.



Low Head Jack Gate fabricated from 3.2mm material suited for water diversion. Quick operation and economical. This valve is 900mm and was grouted in after head wall construction. Suitable for water diversion purposes with head pressure of 0.6m above the incoming pipe.

Information required when ordering

- Inside diameter of pipe.
- Type of attachment required. (Bolted to Headwall, Flanged, Grouted.)
- Quality of water.
- Impurities of water.
- Number of actuations per day.
- Method of actuation (Hydraulic, Lever, Screw, Rotork.)
- Surface finish required.
- Pressure Seating or Unseating.
- Special considerations.

Price List

STANDARD PIPE		LOW HEAD	HIGH HEAD
300mm	12"		
450mm	18"		
600mm	24"		
750mm	30"		
900mm	36"		
1050mm	40"		
1200mm	48"		
1500mm	60"		
1650mm	66"		
1800mm	72"		
SPECIAL	mm		



Batescrew Pumps & Valves Australia

Newell Highway, Tocumwal, N.S.W. 2714
Telephone: (03) 5874 2101; Fax (03) 5874 2084

OFFICES: