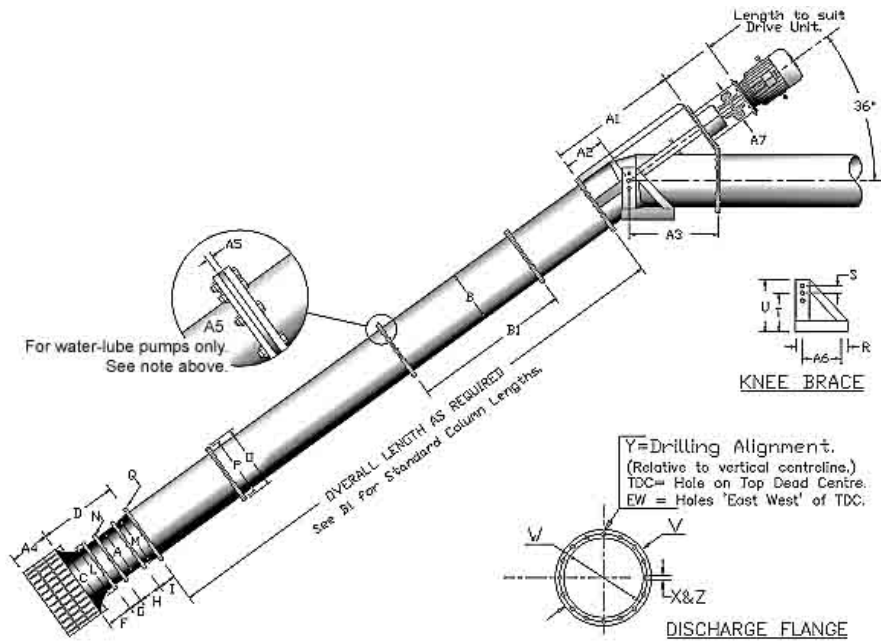


7/7 Pump dimensions

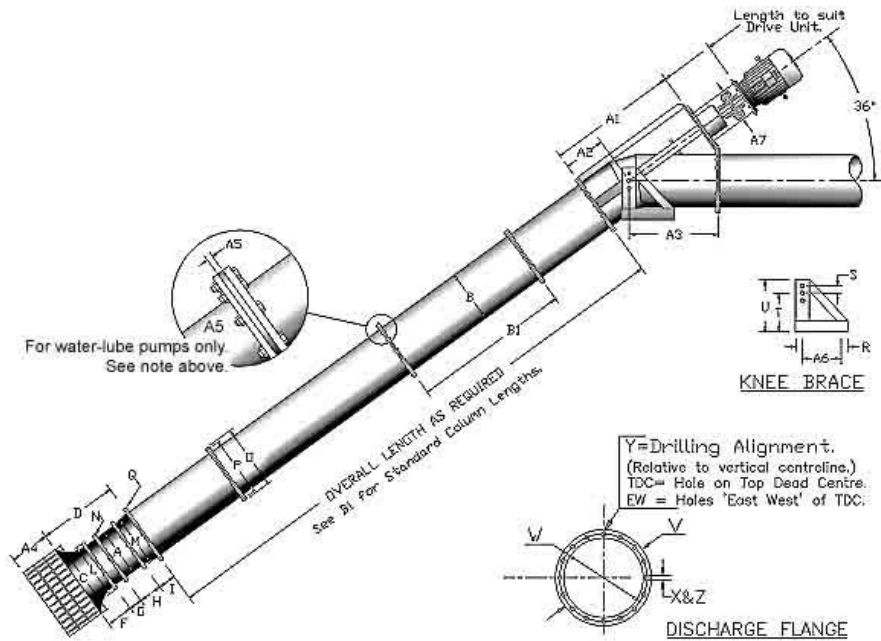
Note: On water lubricated pumps, the length of column sections (B1) is limited to 1.22 metres, to allow for inclusion of a Centre Bearing Holder (A5) between each flange. Bearings are required at each column flange, except the lowest, which is adjacent to the bottom assembly. If the topmost column section is shorter than 1.22 metres, a bearing will not be required under the Discharge Head.



ITEM			ITEM			ITEM		
		mm			mm			mm
A	Impeller Diameter	177.8	M	Stator Flange PCD	222.3	Y	Disch Bolts EW or TDC	(E-W)
B	Column Diameter	177.8	N	Stator Flange Hole Dia.	11.1	Z	Disch Flng No of Bolts	(8)
C	Bellmouth Diameter	292.1	O	Column Flange OD	241.3	A1	Head Height	-
D	1 Stage Length	314.3	P	Column Flange PCD	222.3	A2	Disch C/L Height	-
E	2 Stage Length	514.4	Q	Column Flng Hole Dia.	11.1	A3	Flng Face to Vert C/L	-
F	Bellmouth Length	114.3	R	Knee Brace Length	457	A4	Strainer Length	146
G	Running Ring Length	95.3	S	Pivot Adjustment Crs.	64	A5	Centre Brg Holder Thkns	12.7
H	Stator Length	104.8	T	Pivot Height	355	A6	Knee Brace Bolt Crs.	355
I	Adaptor Length	-	U	Knee Brace Height	457	A7	Drive Column Dia.	101.6
J	Impeller Shaft Length	812.8	V	Discharge Flange OD	241.3	A8	Extension Gland Stool	381
K	Impeller Shaft Diameter	31.8	W	Discharge Flange PCD	222.3			
L	Stator Flange Diameter	241.3	X	Dischg Flng Hole Dia.	11.1		Knee Brace Channel	4x2"
B1 Standard Column Lengths	Water Lube	305	610	914	1219			
	Oil Lube	305	610	914	1219	2438		

7/9 Pump dimensions

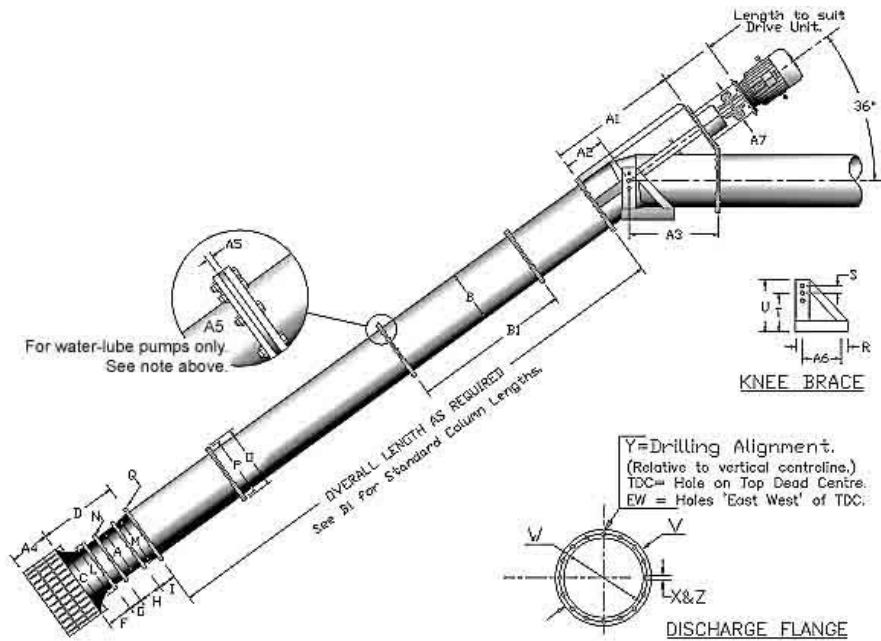
Note: On water lubricated pumps, the length of column sections (B1) is limited to 1.22 metres, to allow for inclusion of a Centre Bearing Holder (A5) between each flange. Bearings are required at each column flange, except the lowest, which is adjacent to the bottom assembly. If the topmost column section is shorter than 1.22 metres, a bearing will not be required under the Discharge Head.



ITEM		mm	ITEM		mm	ITEM		mm
A	Impeller Diameter	177.8	M	Stator Flange PCD	222.3	Y	Disch Bolts EW or TDC	(TDC)
B	Column Diameter	228.6	N	Stator Flange Hole Dia.	11.1	Z	Disch Flng No of Bolts	(8)
C	Bellmouth Diameter	292.1	O	Column Flange OD	304.8	A1	Head Height	890
D	1 Stage Length	415.9	P	Column Flange PCD	279.4	A2	Disch C/L Height	245
E	2 Stage Length	616	Q	Column Flng Hole Dia.	14.3	A3	Flng Face to Vert C/L	685
F	Bellmouth Length	114.3	R	Knee Brace Length	457	A4	Strainer Length	146
G	Running Ring Length	95.3	S	Pivot Adjustment Crs.	64	A5	Centre Brg Holder Thkns	12.7
H	Stator Length	104.8	T	Pivot Height	355	A6	Knee Brace Bolt Crs.	255
I	Adaptor Length	101.6	U	Knee Brace Height	457	A7	Drive Column Dia.	152.4
J	Impeller Shaft Length	812.8	V	Discharge Flange OD	304.8	A8	Extension Gland Stool	
K	Impeller Shaft Diameter	31.8	W	Discharge Flange PCD	279.4			
L	Stator Flange Diameter	241.3	X	Dischg Flng Hole Dia.	14.3		Knee Brace Channel	4x2"
B1 Standard Column Lengths	Water Lube	305	610	914	1219			
	Oil Lube	305	610	914	1219	2438		

9/9 Pump dimensions

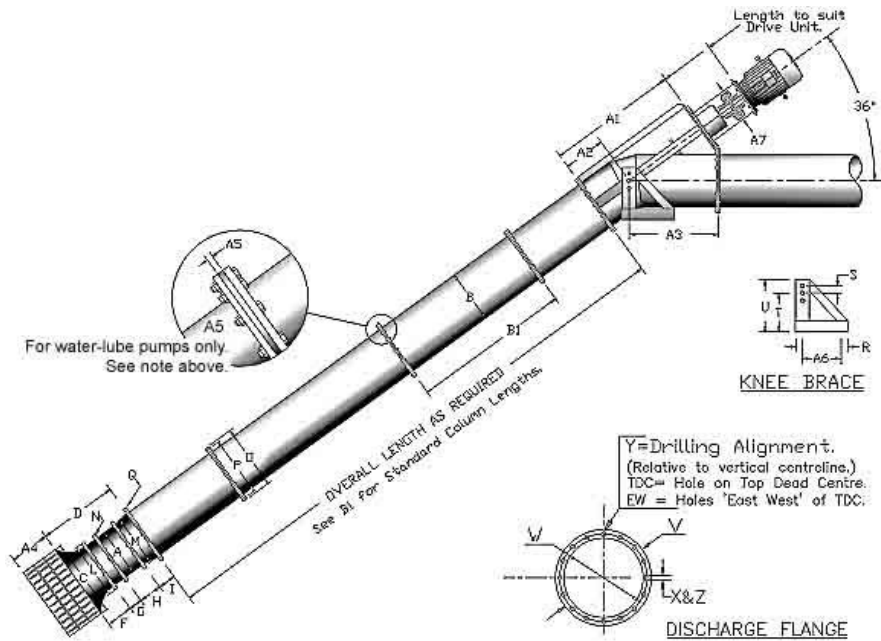
Note: On water lubricated pumps, the length of column sections (B1) is limited to 1.22 metres, to allow for inclusion of a Centre Bearing Holder (A5) between each flange. Bearings are required at each column flange, except the lowest, which is adjacent to the bottom assembly. If the topmost column section is shorter than 1.22 metres, a bearing will not be required under the Discharge Head.



ITEM	mm	ITEM	mm	ITEM	mm			
A	Impeller Diameter	228.6	M	Stator Flange PCD	279.4	Y	Disch Bolts EW or TDC (TDC)	
B	Column Diameter	228.6	N	Stator Flange Hole Dia.	14.3	Z	Disch Flng No of Bolts	8
C	Bellmouth Diameter	381	O	Column Flange OD	304.8	A1	Head Height	890
D	1 Stage Length	262	P	Column Flange PCD	279.4	A2	Disch C/L Height	245
E	2 Stage Length	596.6	Q	Column Flng Hole Dia.	14.3	A3	Flng Face to Vert C/L	685
F	Bellmouth Length	127	R	Knee Brace Length	457	A4	Strainer Length	190
G	Running Ring Length	95.3	S	Pivot Adjustment Crs.	64	A5	Centre Brg Holder Thkns	12.7
H	Stator Length	139.7	T	Pivot Height	355	A6	Knee Brace Bolt Crs.	355
I	Adaptor Length	-	U	Knee Brace Height	457	A7	Drive Column Dia.	152.4
J	Impeller Shaft Length	812.8	V	Discharge Flange OD	311.2	A8	Extension Gland Stool	381
K	Impeller Shaft Diameter	31.75	W	Discharge Flange PCD	279.4			
L	Stator Flange Diameter	304.8	X	Dischg Flng Hole Dia.	14.3		Knee Brace Channel	4x2"
B1 Standard Column Lengths	Water Lube	305	610	914	1219			
	Oil Lube	305	610	914	1219	2438		

9/11 Pump dimensions

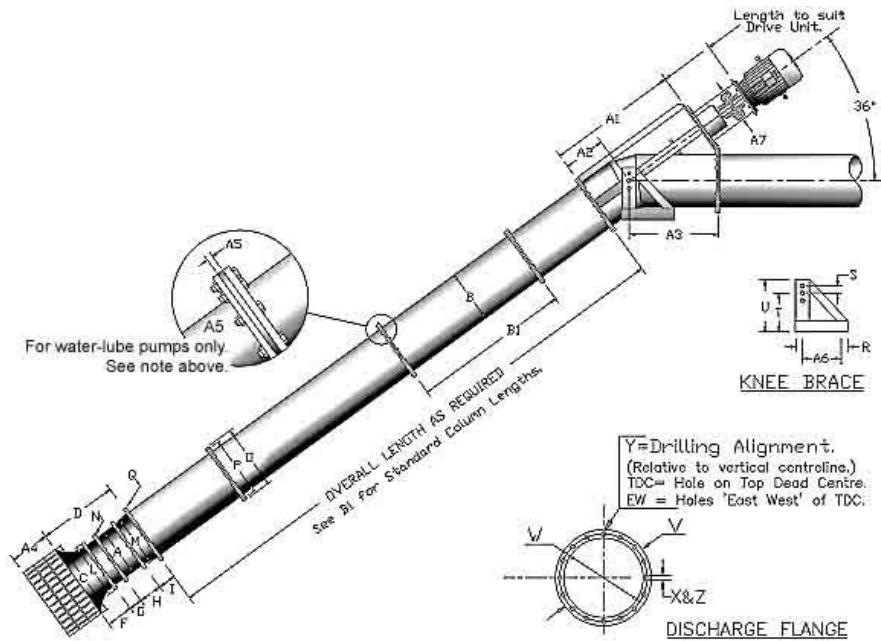
Note: On water lubricated pumps, the length of column sections (B1) is limited to 1.22 metres, to allow for inclusion of a Centre Bearing Holder (A5) between each flange. Bearings are required at each column flange, except the lowest, which is adjacent to the bottom assembly. If the topmost column section is shorter than 1.22 metres, a bearing will not be required under the Discharge Head.



ITEM	mm	ITEM	mm	ITEM	mm			
A	Impeller Diameter	228.6	M	Stator Flange PCD	279.4	Y	Disch Bolts EW or TDC	(TDC)
B	Column Diameter	279.4	N	Stator Flange Hole Dia.	14.3	Z	Disch Flng No of Bolts	(12)
C	Bellmouth Diameter	381	O	Column Flange OD	381	A1	Head Height	995
D	1 Stage Length	466.7	P	Column Flange PCD	346.1	A2	Disch C/L Height	335
E	2 Stage Length	701.7	Q	Column Flng Hole Dia.	14.3	A3	Flng Face to Vert C/L	685
F	Bellmouth Length	127	R	Knee Brace Length	457	A4	Strainer Length	191
G	Running Ring Length	95.3	S	Pivot Adjustment Crs.	64	A5	Centre Brg Holder Thkns	12.7
H	Stator Length	139.7	T	Pivot Height	355	A6	Knee Brace Bolt Crs.	355
I	Adaptor Length	104.8	U	Knee Brace Height	457	A7	Drive Column Dia.	177.8
J	Impeller Shaft Length	812.8	V	Discharge Flange OD	387.4	A8	Extension Gland Stool	381
K	Impeller Shaft Diameter	31.75	W	Discharge Flange PCD	346.1			
L	Stator Flange Diameter	304.8	X	Dischg Flng Hole Dia.	14.3		Knee Brace Channel	4x2"
B1 Standard Column Lengths	Water Lube	305	610	914	1219			
	Oil Lube	305	610	914	1219	2438		

11/11 Pump dimensions

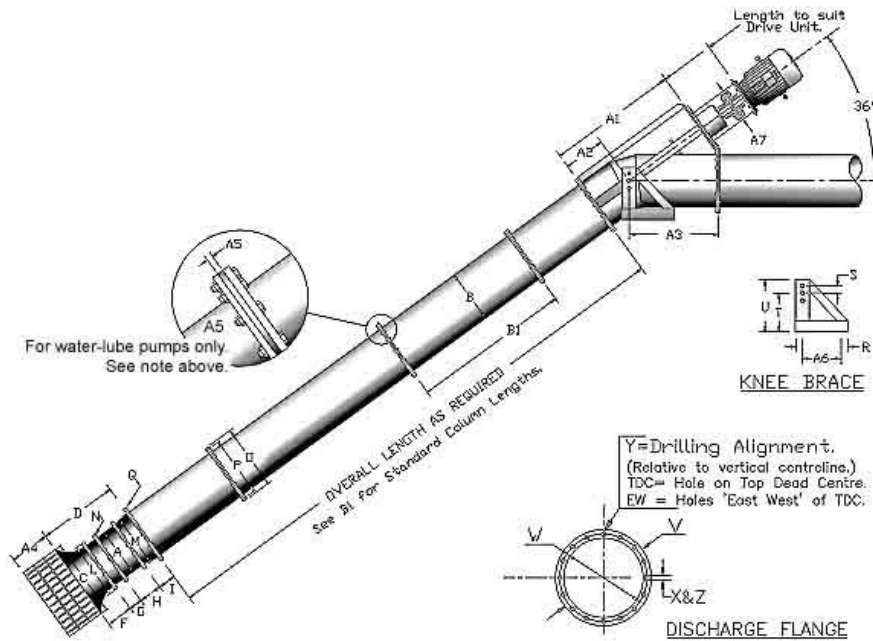
Note: On water lubricated pumps, the length of column sections (B1) is limited to 1.22 metres, to allow for inclusion of a Centre Bearing Holder (A5) between each flange. Bearings are required at each column flange, except the lowest, which is adjacent to the bottom assembly. If the topmost column section is shorter than 1.22 metres, a bearing will not be required under the Discharge Head.



ITEM	mm	ITEM	mm	ITEM	mm			
A	Impeller Diameter	279.4	M	Stator Flange PCD	346.1	Y	Disch Bolts EW or TDC	(TDC)
B	Column Diameter	279.4	N	Stator Flange Hole Dia	14.3	Z	Disch Flng No of Bolts	(12)
C	Bellmouth Diameter	457.2	O	Column Flange OD	381	A1	Head Height	995
D	1 Stage Length	444.5	P	Column Flange PCD	346.1	A2	Disch C/L Height	335
E	2 Stage Length	730.3	Q	Column Flng Hole Dia	14.3	A3	Flng Face to Vert C/L	685
F	Bellmouth Length	158.8	R	Knee Brace Length	457	A4	Strainer Length	228.6
G	Running Ring Length	98.4	S	Pivot Adjustment Crs.	64	A5	Centre Brg Holder Thkns	12.7
H	Stator Length	187.3	T	Pivot Height	355	A6	Knee Brace Bolt Crs.	355
I	Adaptor Length	-	U	Knee Brace Height	457	A7	Drive Column Dia.	177.8
J	Impeller Shaft Length	812.8	V	Discharge Flange OD	387.4	A8	Extension Gland Stool	381
K	Impeller Shaft Diameter	38.1	W	Discharge Flange PCD	346.1			
L	Stator Flange Diameter	381	X	Dischg Flng Hole Dia	14.3		Knee Brace Channel	4x2"
B1 Standard Column Lengths	Water Lube	305	610	914	1219			
	Oil Lube	305	610	914	1219	2438		

11/14 Pump dimensions

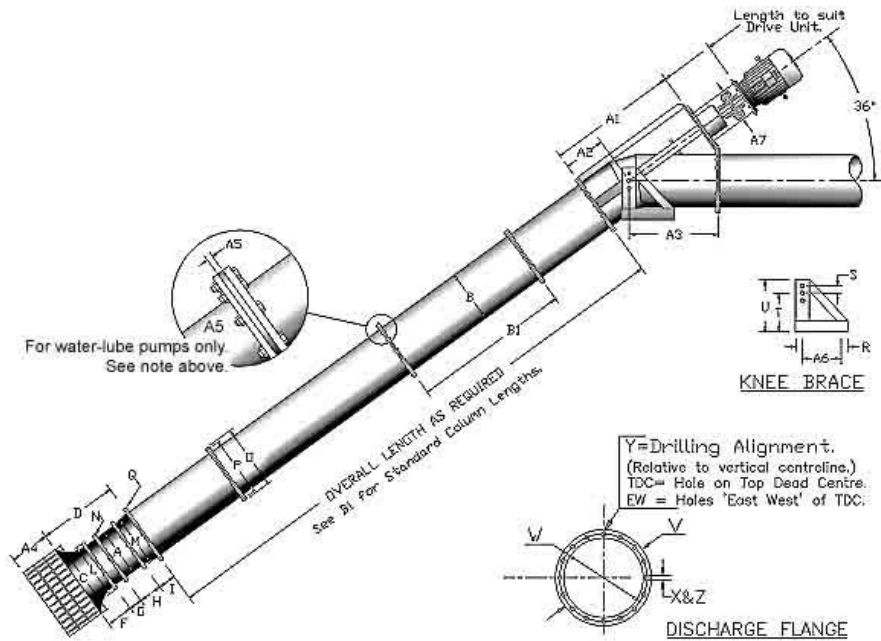
Note: On water lubricated pumps, the length of column sections (B1) is limited to 1.22 metres, to allow for inclusion of a Centre Bearing Holder (A5) between each flange. Bearings are required at each column flange, except the lowest, which is adjacent to the bottom assembly. If the topmost column section is shorter than 1.22 metres, a bearing will not be required under the Discharge Head.



ITEM	mm	ITEM	mm	ITEM	mm			
A	Impeller Diameter	279.4	M	Stator Flange PCD	346.1	Y	Disch Bolts EW or TDC	(TDC)
B	Column Diameter	355.6	N	Stator Flange Hole Dia	14.3	Z	Disch Flng No of Bolts	(12)
C	Bellmouth Diameter	457.2	O	Column Flange OD	457.3	A1	Head Height	960
D	1 Stage Length	565.2	P	Column Flange PCD	419.1	A2	Disch C/L Height	215
E	2 Stage Length	850.9	Q	Column Flng Hole Dia	14.3	A3	Flng Face to Vert C/L	760
F	Bellmouth Length	158.8	R	Knee Brace Length	457	A4	Strainer Length	228.6
G	Running Ring Length	98.4	S	Pivot Adjustment Crs.	64	A5	Centre Brg Holder Thkns	12.7
H	Stator Length	187.3	T	Pivot Height	355	A6	Knee Brace Bolt Crs.	355
I	Adaptor Length	120.7	U	Knee Brace Height	457	A7	Drive Column Dia.	228.6
J	Impeller Shaft Length	812.8	V	Discharge Flange OD	463.6	A8	Extension Gland Stool	381
K	Impeller Shaft Diameter	38.1	W	Discharge Flange PCD	419.1			
L	Stator Flange Diameter	381	X	Dischg Flng Hole Dia	14.3		Knee Brace Channel	4x2"
B1 Standard Column Lengths	Water Lube	305	610	914	1219			
	Oil Lube	305	610	914	1219	2438		

14/16 Pump dimensions

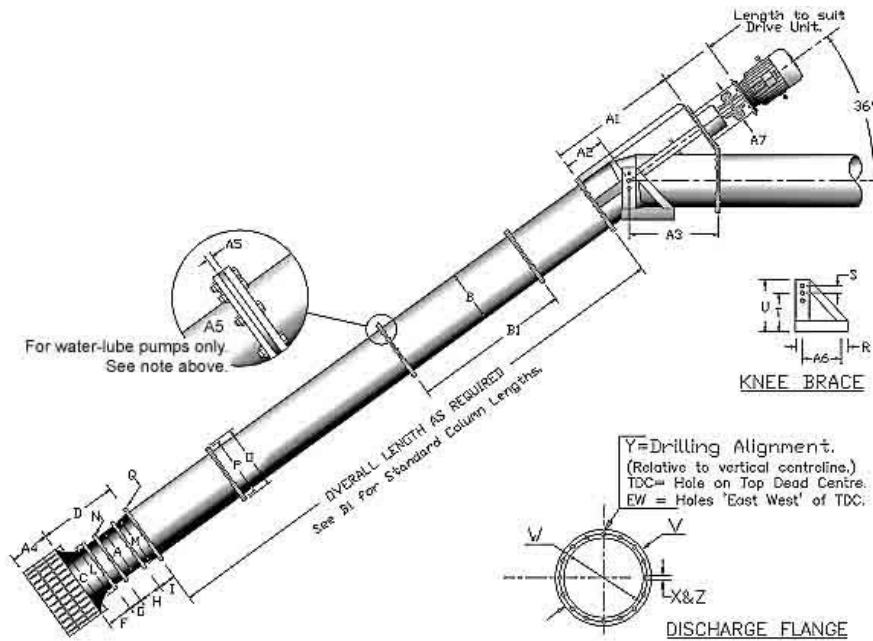
Note: On water lubricated pumps, the length of column sections (B1) is limited to 1.22 metres, to allow for inclusion of a Centre Bearing Holder (A5) between each flange. Bearings are required at each column flange, except the lowest, which is adjacent to the bottom assembly. If the topmost column section is shorter than 1.22 metres, a bearing will not be required under the Discharge Head.



ITEM	mm	ITEM	mm	ITEM	mm			
A	Impeller Diameter	355.6	M	Stator Flange PCD	419.1	Y	Disch Bolts EW or TDC	(TDC)
B	Column Diameter	406.4	N	Stator Flange Hole Dia.	14.3	Z	Disch Flng No of Bolts	(16)
C	Bellmouth Diameter	609.6	O	Column Flange OD	520.7	A1	Head Height	1058
D	1 Stage Length	571.5	P	Column Flange PCD	479.4	A2	Disch C/L Height	268
E	2 Stage Length	860.4	Q	Column Flng Hole Dia.	14.3	A3	Flng Face to Vert C/L	768
F	Bellmouth Length	190.5	R	Knee Brace Length	457	A4	Strainer Length	304.8
G	Running Ring Length	114.3	S	Pivot Adjustment Crs.	64	A5	Centre Brg Holder Thkns	12.7
H	Stator Length	181	T	Pivot Height	355	A6	Knee Brace Bolt Crs.	355
I	Adaptor Length	104.8	U	Knee Brace Height	457	A7	Drive Column Dia.	279.4
J	Impeller Shaft Length	812.8	V	Discharge Flange OD	522.3	A8	Extension Gland Stool	381
K	Impeller Shaft Diameter	38.1	W	Discharge Flange PCD	479.4			
L	Stator Flange Diameter	457.2	X	Dischg Flng Hole Dia.	14.3		Knee Brace Channel	4x2"
B1 Standard Column Lengths	Water Lube	305	610	914	1219			
	Oil Lube	305	610	914	1219	2438		

17/18 Pump dimensions

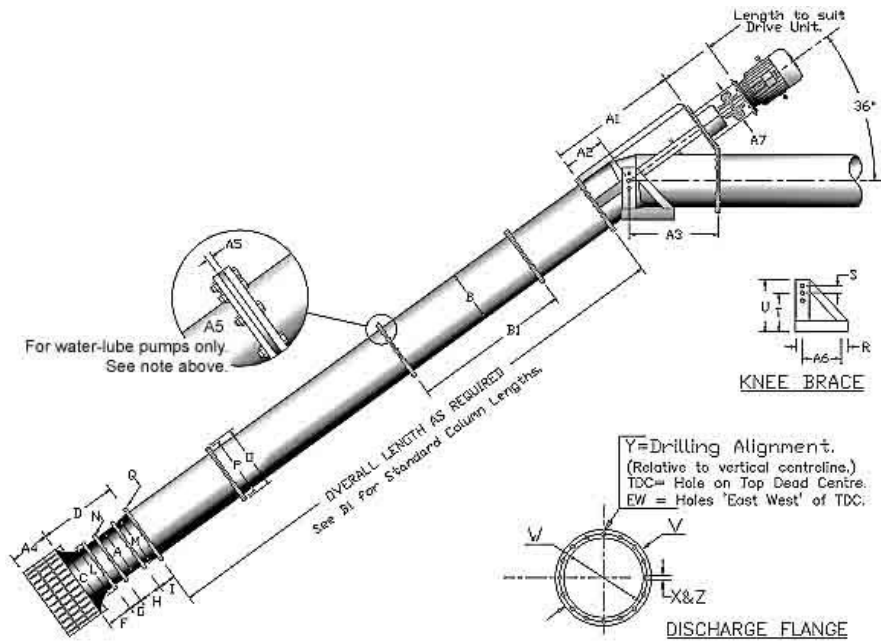
Note: On water lubricated pumps, the length of column sections (B1) is limited to 1.22 metres, to allow for inclusion of a Centre Bearing Holder (A5) between each flange. Bearings are required at each column flange, except the lowest, which is adjacent to the bottom assembly. If the topmost column section is shorter than 1.22 metres, a bearing will not be required under the Discharge Head.



ITEM	mm	ITEM	mm	ITEM	mm
A	Impeller Diameter	431.8	M	Stator Flange PCD	495.3
B	Column Diameter	457.2	N	Stator Flange Hole Dia.	17.5
C	Bellmouth Diameter	685.8	O	Column Flange OD	558.8
D	1 Stage Length	647	P	Column Flange PCD	508
E	2 Stage Length	934	Q	Column Flng Hole Dia.	17.5
F	Bellmouth Length	209.6	R	Knee Brace Length	457
G	Running Ring Length	104.8	S	Pivot Adjustment Crs.	64
H	Stator Length	182.6	T	Pivot Height	355
I	Adaptor Length	150	U	Knee Brace Height	457
J	Impeller Shaft Length	812.8	V	Discharge Flange OD	565.2
K	Impeller Shaft Diameter	44.45	W	Discharge Flange PCD	508
L	Stator Flange Diameter	533.4	X	Dischg Flng Hole Dia.	17.5
B1 Standard Column Lengths	Water Lube	305	610	914	1219
	Oil Lube	305	610	914	1219
					2438

17/21 Pump dimensions

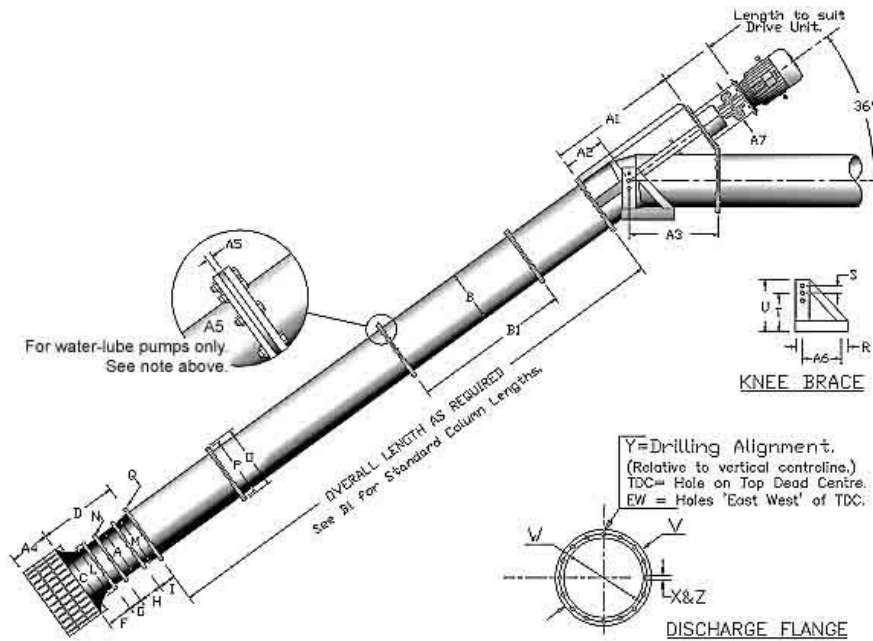
Note: On water lubricated pumps, the length of column sections (B1) is limited to 1.22 metres, to allow for inclusion of a Centre Bearing Holder (A5) between each flange. Bearings are required at each column flange, except the lowest, which is adjacent to the bottom assembly. If the topmost column section is shorter than 1.22 metres, a bearing will not be required under the Discharge Head.



ITEM	mm	ITEM	mm	ITEM	mm			
A	Impeller Diameter	431.8	M	Stator Flange PCD	495.3	Y	Disch Bolts EW or TDC	(TDC)
B	Column Diameter	533.4	N	Stator Flange Hole Dia.	17.5	Z	Disch Flng No of Bolts	(16)
C	Bellmouth Diameter	685.8	O	Column Flange OD	635	A1	Head Height	1238
D	1 Stage Length	654	P	Column Flange PCD	590.6	A2	Disch C/L Height	317
E	2 Stage Length	942	Q	Column Flng Hole Dia.	17.5	A3	Flng Face to Vert C/L	916
F	Bellmouth Length	209.6	R	Knee Brace Length	533	A4	Strainer Length	343
G	Running Ring Length	104.8	S	Pivot Adjustment Crs.	64	A5	Centre Brg Holder Thkns	19.1
H	Stator Length	182.6	T	Pivot Height	432	A6	Knee Brace Bolt Crs.	381
I	Adaptor Length	152.7	U	Knee Brace Height	533	A7	Drive Column Dia.	355.6
J	Impeller Shaft Length	812.8	V	Discharge Flange OD	642.9	A8	Extension Gland Stool	381
K	Impeller Shaft Diameter	44.45	W	Discharge Flange PCD	590.6			
L	Stator Flange Diameter	533.4	X	Dischg Flng Hole Dia.	17.5		Knee Brace Channel	5x2.5"
B1 Standard Column Lengths	Water Lube	305	610	914	1219			
	Oil Lube	305	610	914	1219	2438		

21/21 Pump dimensions

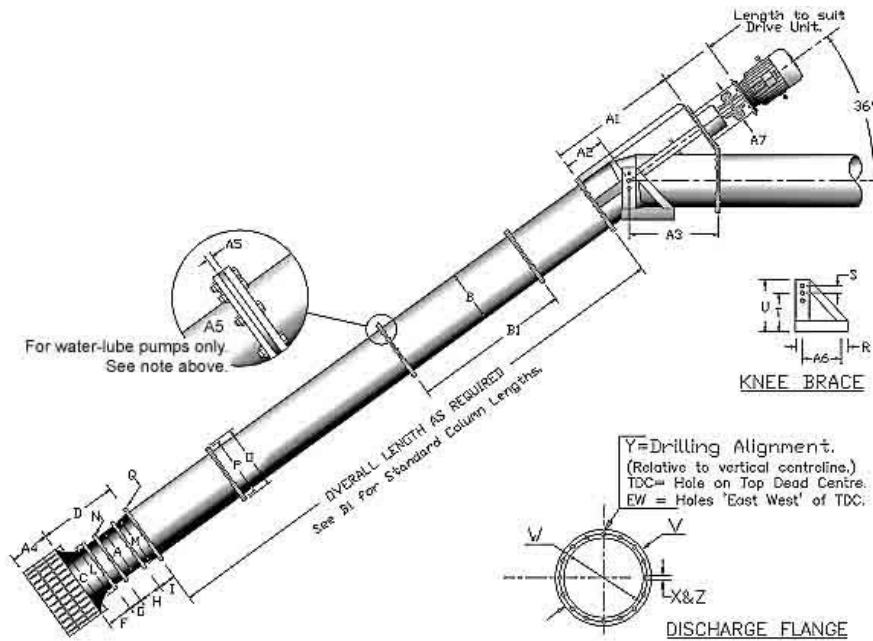
Note: On water lubricated pumps, the length of column sections (B1) is limited to 1.22 metres, to allow for inclusion of a Centre Bearing Holder (A5) between each flange. Bearings are required at each column flange, except the lowest, which is adjacent to the bottom assembly. If the topmost column section is shorter than 1.22 metres, a bearing will not be required under the Discharge Head.



ITEM	mm	ITEM	mm	ITEM	mm			
A	Impeller Diameter	533.4	M	Stator Flange PCD	622.3	Y	Disch Bolts EW or TDC	(TDC)
B	Column Diameter	533.4	N	Stator Flange Hole Dia.	22.2	Z	Disch Flng No of Bolts	(16)
C	Bellmouth Diameter	914.4	O	Column Flange OD	635	A1	Head Height	1238
D	1 Stage Length	736.6	P	Column Flange PCD	590.6	A2	Disch C/L Height	317
E	2 Stage Length	1158.9	Q	Column Flng Hole Dia.	17.5	A3	Flng Face to Vert C/L	916
F	Bellmouth Length	317.5	R	Knee Brace Length	533	A4	Strainer Length	457
G	Running Ring Length	171.5	S	Pivot Adjustment Crs.	64	A5	Centre Brg Holder Thkns	19.1
H	Stator Length	268.3	T	Pivot Height	432	A6	Knee Brace Bolt Crs.	381
I	Adaptor Length	-	U	Knee Brace Height	533	A7	Drive Column Dia.	355.6
J	Impeller Shaft Length	1066.8	V	Discharge Flange OD	642.9	A8	Extension Gland Stool	381
K	Impeller Shaft Diameter	63.5	W	Discharge Flange PCD	590.6			
L	Stator Flange Diameter	673.1	X	Dischg Flng Hole Dia.	17.5		Knee Brace Channel	5x2.5"
B1 Standard Column Lengths	Water Lube	305	610	914	1219			
	Oil Lube	305	610	914	1219	2438		

21/24 Pump dimensions

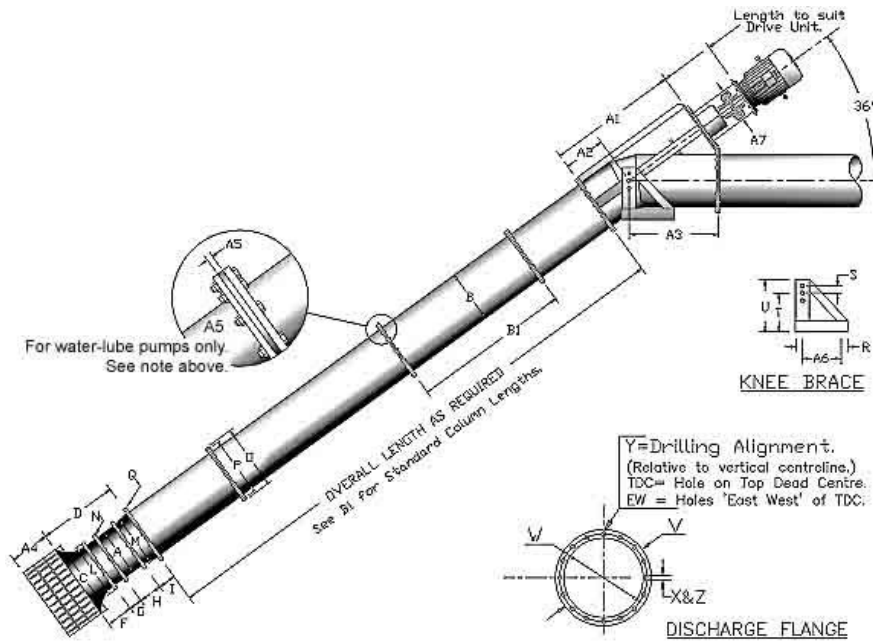
Note: On water lubricated pumps, the length of column sections (B1) is limited to 1.22 metres, to allow for inclusion of a Centre Bearing Holder (A5) between each flange. Bearings are required at each column flange, except the lowest, which is adjacent to the bottom assembly. If the topmost column section is shorter than 1.22 metres, a bearing will not be required under the Discharge Head.



ITEM	mm	ITEM	mm	ITEM	mm			
A	Impeller Diameter	533.4	M	Stator Flange PCD	622.3	Y	Disch Bolts EW or TDC	(TDC)
B	Column Diameter	609.6	N	Stator Flange Hole Dia.	22.2	Z	Disch Flng No of Bolts	(16)
C	Bellmouth Diameter	914.4	O	Column Flange OD	736.6	A1	Head Height	1384
D	1 Stage Length	946.2	P	Column Flng PCD	692.2	A2	Disch C/L Height	330
E	2 Stage Length	1368.4	Q	Column Flng Hole Dia.	22.2	A3	Flng Face to Vert C/L	1130
F	Bellmouth Length	317.5	R	Knee Brace Length	610	A4	Strainer Length	457
G	Running Ring Length	171.5	S	Pivot Adjustment Crs.	64	A5	Centre Brg Holder Thkns	19.1
H	Stator Length	268.3	T	Pivot Height	509	A6	Knee Brace Bolt Crs.	457.6
I	Adaptor Length	209.6	U	Knee Brace Height	610	A7	Drive Column Dia.	355.6
J	Impeller Shaft Length	1066.8	V	Discharge Flange OD	750.9	A8	Extension Gland Stool	381
K	Impeller Shaft Diameter	63.5	W	Discharge Flange PCD	692.2			
L	Stator Flange Diameter	673.1	X	Dischg Flng Hole Dia.	22.2		Knee Brace Channel	6x3"
B1 Standard Column Lengths	Water Lube	305	610	914	1219			
	Oil Lube	305	610	914	1219	2438		

24/24 Pump dimensions

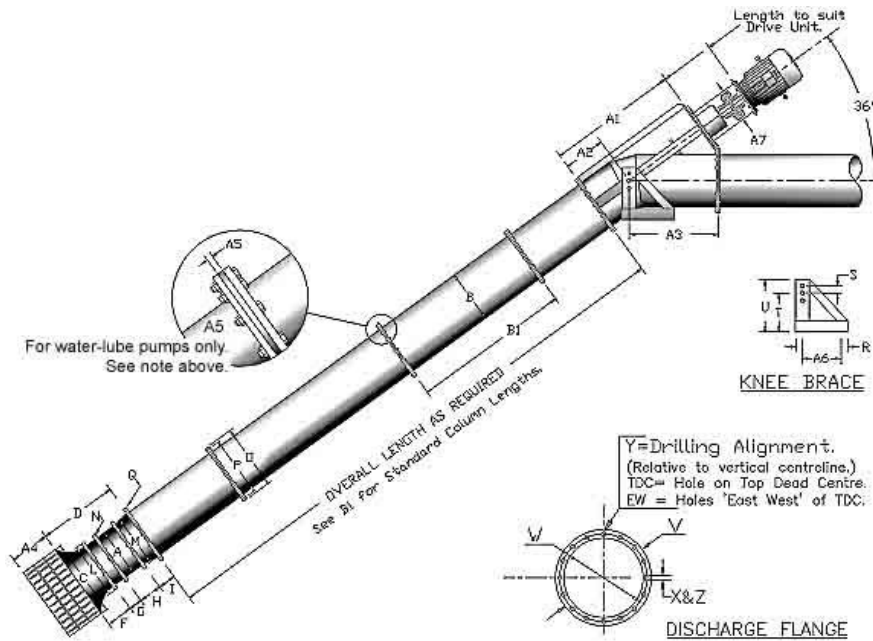
Note: On water lubricated pumps, the length of column sections (B1) is limited to 1.22 metres, to allow for inclusion of a Centre Bearing Holder (A5) between each flange. Bearings are required at each column flange, except the lowest, which is adjacent to the bottom assembly. If the topmost column section is shorter than 1.22 metres, a bearing will not be required under the Discharge Head.



ITEM	mm	ITEM	mm	ITEM	mm			
A	Impeller Diameter	609.6	M	Stator Flange PCD	711.2	Y	Disch Bolts EW or TDC	(TDC)
B	Column Diameter	609.6	N	Stator Flange Hole Dia.	22.2	Z	Disch Flng No of Bolts	(16)
C	Bellmouth Diameter	1066.8	O	Column Flange OD	736.6	A1	Head Height	1384
D	1 Stage Length	825.5	P	Column Flange PCD	692.2	A2	Disch C/L Height	330
E	2 Stage Length	1320.8	Q	Column Flng Hole Dia.	22.2	A3	Flng Face to Vert C/L	1130
F	Bellmouth Length	330.2	R	Knee Brace Length	610	A4	Strainer Length	533
G	Running Ring Length	196.9	S	Pivot Adjustment Crs.	64	A5	Centre Brg Holder Thkns	19.1
H	Stator Length	298.5	T	Pivot Height	509	A6	Knee Brace Bolt Crs.	458
I	Adaptor Length	-	U	Knee Brace Height	610	A7	Drive Column Dia.	355.6
J	Impeller Shaft Length	1130.3	V	Discharge Flange OD	750.9	A8	Extension Gland Stool	381
K	Impeller Shaft Diameter	76.2	W	Discharge Flange PCD	692.2			
L	Stator Flange Diameter	762	X	Dischg Flng Hole Dia.	22.2		Knee Brace Channel	6x3"
B1 Standard Column Lengths	Water Lube	305	610	914	1219			
	Oil Lube	305	610	914	1219	2438		

24/30 Pump dimensions

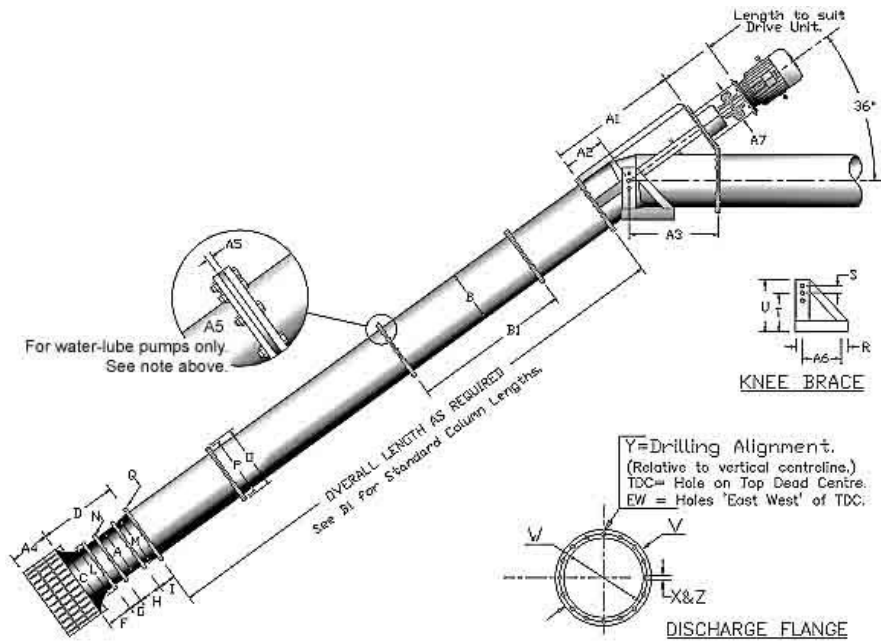
Note: On water lubricated pumps, the length of column sections (B1) is limited to 1.22 metres, to allow for inclusion of a Centre Bearing Holder (A5) between each flange. Bearings are required at each column flange, except the lowest, which is adjacent to the bottom assembly. If the topmost column section is shorter than 1.22 metres, a bearing will not be required under the Discharge Head.



ITEM	mm	ITEM	mm	ITEM	mm			
A	Impeller Diameter	609.6	M	Stator Flange PCD	711.2	Y	Disch Bolts EW or TDC	(TDC)
B	Column Diameter	762	N	Stator Flange Hole Dia.	22.2	Z	Disch Flng No of Bolts	20
C	Bellmouth Diameter	1066.8	O	Column Flange OD	876.3	A1	Head Height	1650
D	1 Stage Length	1085.9	P	Column Flange PCD	838.2	A2	Disch C/L Height	330
E	2 Stage Length	1581.2	Q	Column Flng Hole Dia.	22.2	A3	Flng Face to Vert C/L	1321
F	Bellmouth Length	330.2	R	Knee Brace Length	762	A4	Strainer Length	566
G	Running Ring Length	196.9	S	Pivot Adjustment Crs.	64	A5	Centre Brg Holder Thkns	19.1
H	Stator Length	298.5	T	Pivot Height	661	A6	Knee Brace Bolt Crs.	610
I	Adaptor Length	260.4	U	Knee Brace Height	762	A7	Drive Column Dia.	355.6
J	Impeller Shaft Length	1130.3	V	Discharge Flange OD	896.9	A8	Extension Gland Stool	381
K	Impeller Shaft Diameter	76.2	W	Discharge Flange PCD	838.2			
L	Stator Flange Diameter	762	X	Dischg Flng Hole Dia.	22.2		Knee Brace Channel	8x3"
B1 Standard Column Lengths	Water Lube	305	610	914	1219			
	Oil Lube	305	610	914	1219	2438		

32/36 Pump dimensions

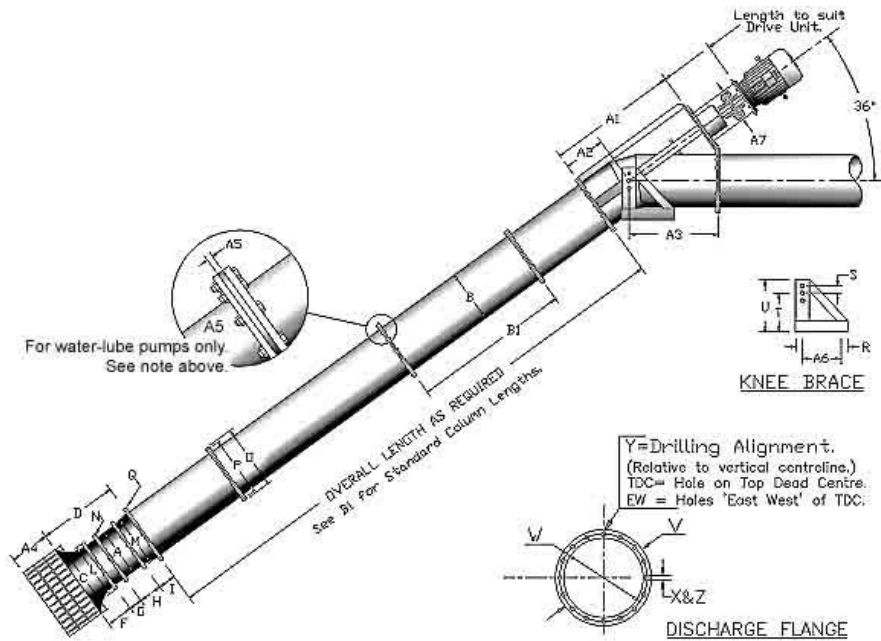
Note: On water lubricated pumps, the length of column sections (B1) is limited to 1.22 metres, to allow for inclusion of a Centre Bearing Holder (A5) between each flange. Bearings are required at each column flange, except the lowest, which is adjacent to the bottom assembly. If the topmost column section is shorter than 1.22 metres, a bearing will not be required under the Discharge Head.



ITEM	mm	ITEM	mm	ITEM	mm			
A	Impeller Diameter	812.8	M	Stator Flange PCD	914.4	Y	Disch Bolts EW or TDC	(TDC)
B	Column Diameter	914.4	N	Stator Flange Hole Dia.	27	Z	Disch Flng No of Bolts	(20)
C	Bellmouth Diameter	1295.4	O	Column Flange OD	1054.1	A1	Head Height	1840
D	1 Stage Length	1955.8	P	Column Flange PCD	1003.3	A2	Disch C/L Height	256
E	2 Stage Length	2768.6	Q	Column Flng Hole Dia.	28.6	A3	Flng Face to Vert C/L	1587
F	Bellmouth Length	457.2	R	Knee Brace Length	914	A4	Strainer Length	648
G	Running Ring Length	355.6	S	Pivot Adjustment Crs.	64	A5	Centre Brg Holder Thkns	24
H	Stator Length	457.2	T	Pivot Height	813	A6	Knee Brace Bolt Crs.	762
I	Adaptor Length	381	U	Knee Brace Height	914	A7	Drive Column Dia.	508
J	Impeller Shaft Length	1500	V	Discharge Flange OD	1074.7	A8	Extension Gland Stool	600
K	Impeller Shaft Diameter	101.6	W	Discharge Flange PCD	1003.3			
L	Stator Flange Diameter	984.3	X	Dischg Flng Hole Dia.	28.6		Knee Brace Channel	8x3"
B1 Standard Column Lengths	Water Lube	305	610	914	1219			
	Oil Lube	305	610	914	1219	2438		

32/42 Pump dimensions

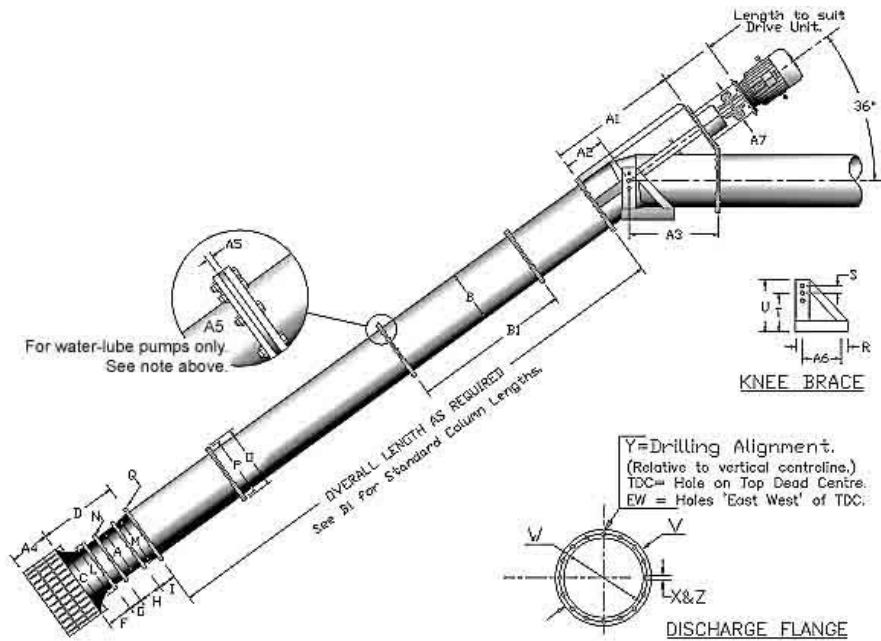
Note: On water lubricated pumps, the length of column sections (B1) is limited to 1.22 metres, to allow for inclusion of a Centre Bearing Holder (A5) between each flange. Bearings are required at each column flange, except the lowest, which is adjacent to the bottom assembly. If the topmost column section is shorter than 1.22 metres, a bearing will not be required under the Discharge Head.



ITEM	mm	ITEM	mm	ITEM	mm			
A	Impeller Diameter	812.8	M	Stator Flange PCD	914.4	Y	Disch Bolts EW or TDC	(TDC)
B	Column Diameter	1066.8	N	Stator Flange Hole Dia.	27	Z	Disch Flng No of Bolts	(24)
C	Bellmouth Diameter	1295.4	O	Column Flange OD	1213	A1	Head Height	2023
D	1 Stage Length	2116.8	P	Column Flange PCD	1162.1	A2	Disch C/L Height	279
E	2 Stage Length	2918.6	Q	Column Flng Hole Dia.	28.6	A3	Flng Face to Vert C/L	1741
F	Bellmouth Length	457.2	R	Knee Brace Length	1067	A4	Strainer Length	648
G	Running Ring Length	355.6	S	Pivot Adjustment Crs.	64	A5	Centre Brg Holder Thkns	24
H	Stator Length	457.2	T	Pivot Height	966	A6	Knee Brace Bolt Crs.	915
I	Adaptor Length	381	U	Knee Brace Height	1067	A7	Drive Column Dia.	508
J	Impeller Shaft Length	1500	V	Discharge Flange OD	1227.1	A8	Extension Gland Stool	600
K	Impeller Shaft Diameter	101.6	W	Discharge Flange PCD	1162.1			
L	Stator Flange Diameter	984	X	Dischng Flng Hole Dia.	28.6		Knee Brace Channel	8x3"
B1 Standard Column Lengths	Water Lube	305	610	914	1219			
	Oil Lube	305	610	914	1219	2438		

32/48 Pump dimensions

Note: On water lubricated pumps, the length of column sections (B1) is limited to 1.22 metres, to allow for inclusion of a Centre Bearing Holder (A5) between each flange. Bearings are required at each column flange, except the lowest, which is adjacent to the bottom assembly. If the topmost column section is shorter than 1.22 metres, a bearing will not be required under the Discharge Head.



ITEM			ITEM			ITEM		
		mm			mm			mm
A	Impeller Diameter	812.8	M	Stator Flange PCD	914.4	Y	Disch Bolts EW or TDC	(TDC)
B	Column Diameter	1219.2	N	Stator Flange Hole Dia.	27	Z	Disch Flng No of Bolts	32
C	Bellmouth Diameter	1295.4	O	Column Flange OD	1490	A1	Head Height	2210
D	1 Stage Length	2116.8	P	Column Flange PCD	1410	A2	Disch C/L Height	284
E	2 Stage Length	2918.6	Q	Column Flng Hole Dia.	28.6	A3	Flng Face to Vert C/L	1838
F	Bellmouth Length	457.2	R	Knee Brace Length	985	A4	Strainer Length	648
G	Running Ring Length	355.6	S	Pivot Adjustment Crs.	64	A5	Centre Brg Holder Thkns	29
H	Stator Length	457.2	T	Pivot Height	870	A6	Knee Brace Bolt Crs.	835
I	Adaptor Length		U	Knee Brace Height	985	A7	Drive Column Dia.	609.6
J	Impeller Shaft Length	1500	V	Discharge Flange OD	1490	A8	Extension Gland Stool	600
K	Impeller Shaft Diameter	101.6	W	Discharge Flange PCD	1410			
L	Stator Flange Diameter		X	Dischg Flng Hole Dia.	28.6		Knee Brace Channel	8x3"
B1 Standard Column Lengths	Water Lube	305	610	914	1219			
	Oil Lube	305	610	914	1219	2438		