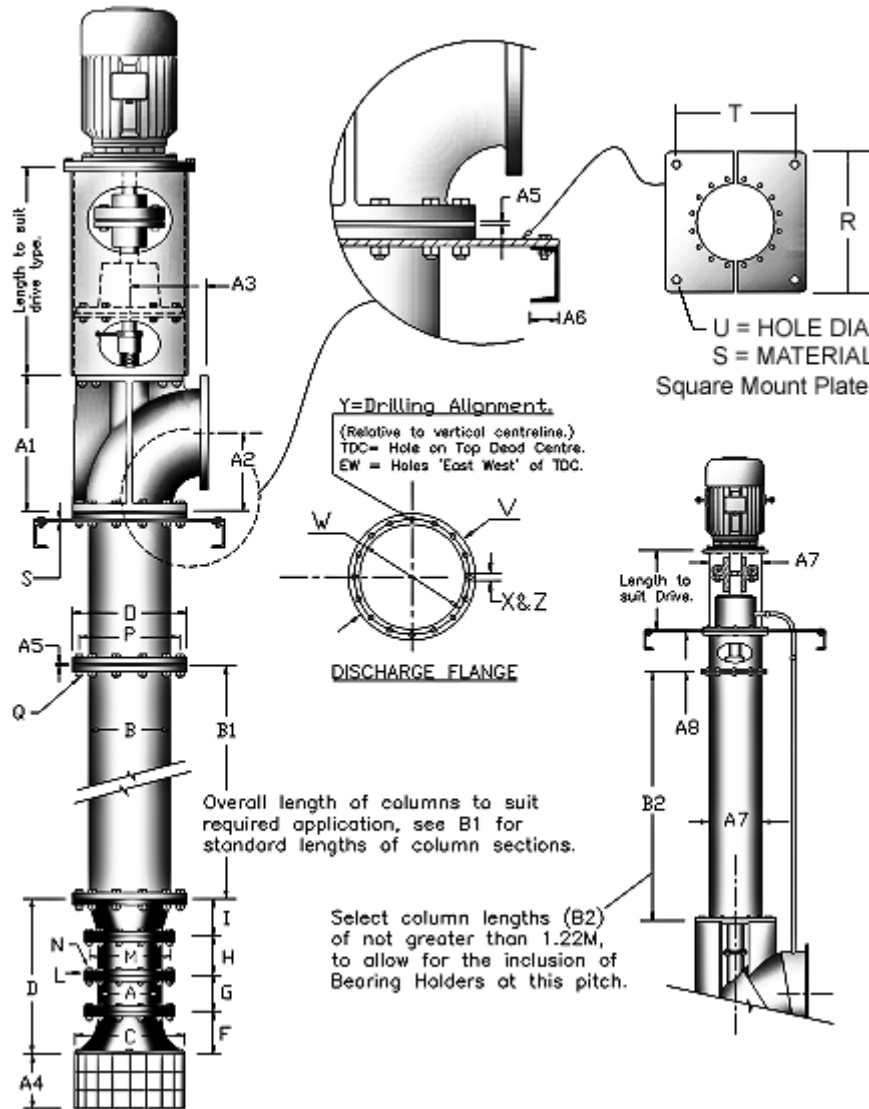


4/4 Pump dimensions

NOTE: THIS SIZE IS USUALLY SUPPLIED AS A 'PORTAX' PORTABLE PUMP.

Note: On water lubricated pumps, the length of column sections (B1) is limited to 1.22 metres, to allow for inclusion of a Centre Bearing Holder (A5) between each flange. Bearings are required at each column flange, except the lowest, which is adjacent to the bottom assembly. If the topmost column section is shorter than 1.22 metres, a bearing will not be required under the Discharge Head.

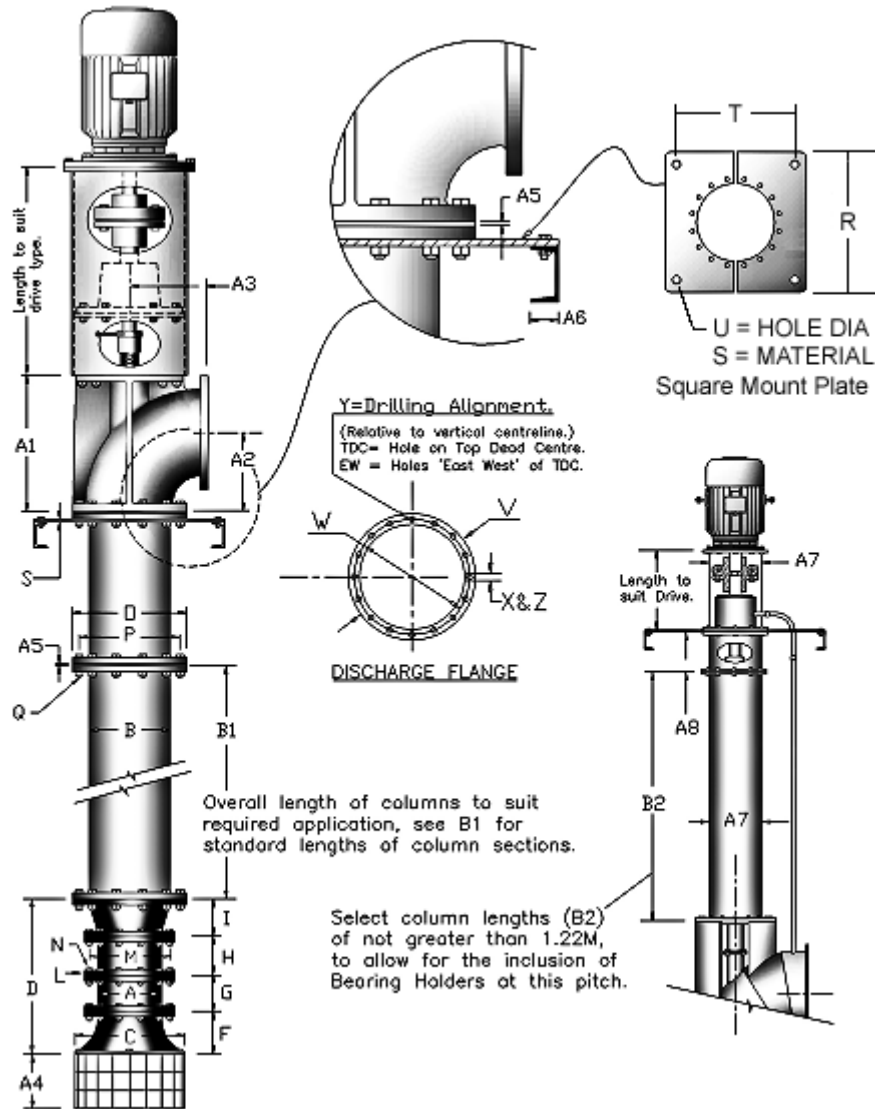


ITEM	mm	ITEM	mm	ITEM	mm			
A	Impeller Diameter	101.6	M	Stator Flange PCD	155.6			
B	Column Diameter	101.6	N	Stator Flange Hole Dia.	11.1			
C	Bellmouth Diameter	228.6	O	Column Flange OD	162.6			
D	1 Stage Length	209.6	P	Column Flange PCD	142.9			
E	2 Stage Length	311.2	Q	Column Flange Hole Dia.	11.1			
F	Bellmouth Length	98.4	R	Mount Plate Square	242.9			
G	Running Ring Length	-	S	Mount Plate Thickness	12.7			
H	Stator Length	104.8	T	Mount Plate Hole Crs.	292.1			
I	Adaptor Length	-	U	Mount Plate Hole Dia.	14.3			
J	Impeller Shaft Length	228.6	V	Discharge Flange OD	165.1			
K	Impeller Shaft Diameter	19.1	W	Discharge Flange PCD	142.9			
L	Stator Flange Diameter	177.8	X	Disch Flng Hole Dia.	11.1			
					Head Casting Mtl			
					Cast Al			
B1	Column	Water Lube	300	600	900	1200		
		Oil Lube	300	600	900	1200	2400	
B2	Extended Drive Column	Water Lube	300	600	900	1200		
		Oil Lube	300	600	900	1200	2400	

5/6 Pump dimensions

NOTE: THIS SIZE IS USUALLY SUPPLIED AS A 'PORTAX' PORTABLE PUMP.

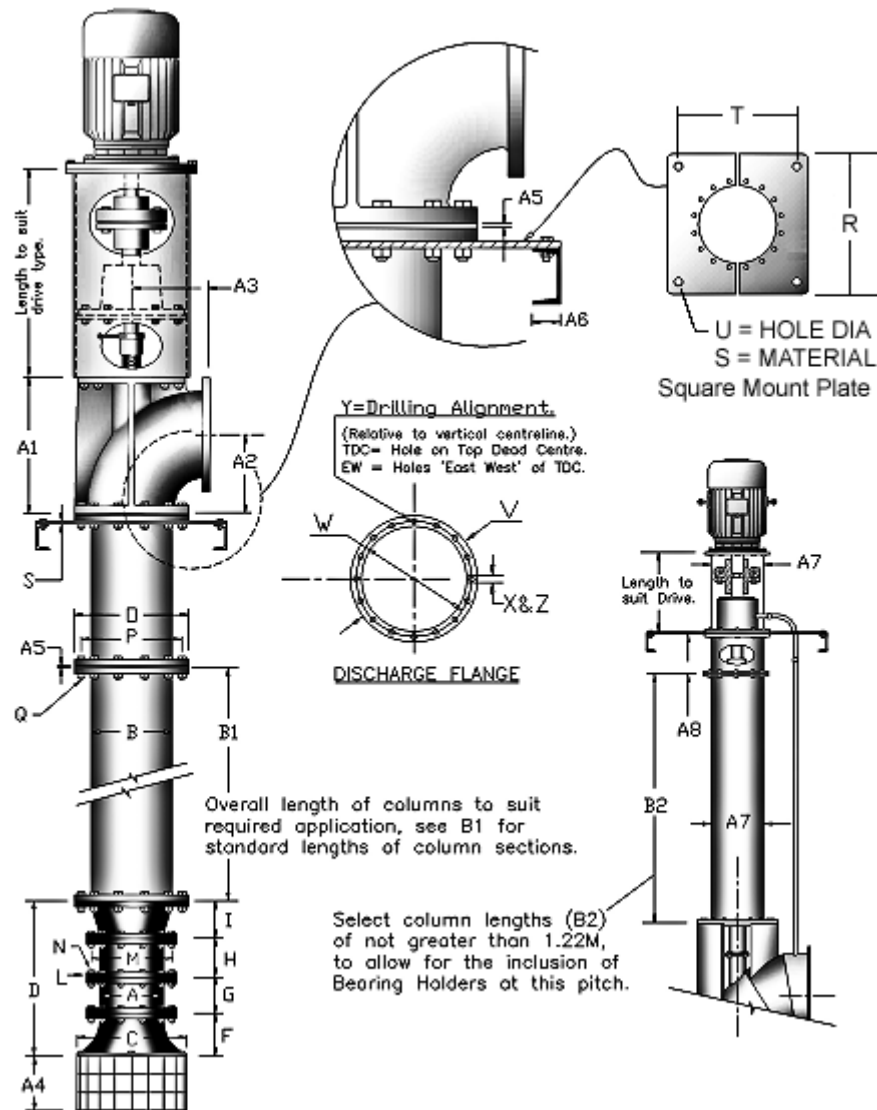
Note: On water lubricated pumps, the length of column sections (B1) is limited to 1.22 metres, to allow for inclusion of a Centre Bearing Holder (A5) between each flange. Bearings are required at each column flange, except the lowest, which is adjacent to the bottom assembly. If the topmost column section is shorter than 1.22 metres, a bearing will not be required under the Discharge Head.



ITEM		mm	ITEM		mm	ITEM		mm
A	Impeller Diameter	127	M	Stator Flange PCD	177.8	Y	Disch Bolts EW or TDC	(E-W)
B	Column Diameter	152.4	N	Stator Flange Hole Dia.	11.1	Z	Disch Flng No of Bolts	(8)
C	Bellmouth Diameter	304.8	O	Column Flange OD	228.6	A1	Head Height	270
D	1 Stage Length	479.4	P	Column Flange PCD	203.2	A2	Disch C/L Height	152.4
E	2 Stage Length	368.3	Q	Column Flange Hole Dia.	11.1	A3	Fng Face to Vert C/L	152.4
F	Bellmouth Length	127	R	Mount Plate Square	457.2	A4	Strainer Length	152.4
G	Running Ring Length	-	S	Mount Plate Thickness	12.7	A5	Centre Brg Holder Thkns	12.7
H	Stator Length	114.3	T	Mount Plate Hole Crs.	406.4	A6	Support Channel	50.8
I	Adaptor Length	228.6	U	Mount Plate Hole Dia.	14.3			
J	Impeller Shaft Length	228.6	V	Discharge Flange OD	228.6			
K	Impeller Shaft Diameter	19.1	W	Discharge Flange PCD	203.2			
L	Stator Flange Diameter	203.2	X	Disch Flng Hole Dia.	11.1		Head Casting Mtl	Cast Al
B1	Column	Water Lube	300	600	900	1200		
		Oil Lube	300	600	900	1200	2400	
B2	Extended Drive Column	Water Lube	300	600	900	1200		
		Oil Lube	300	600	900	1200	2400	

7/7 Pump dimensions

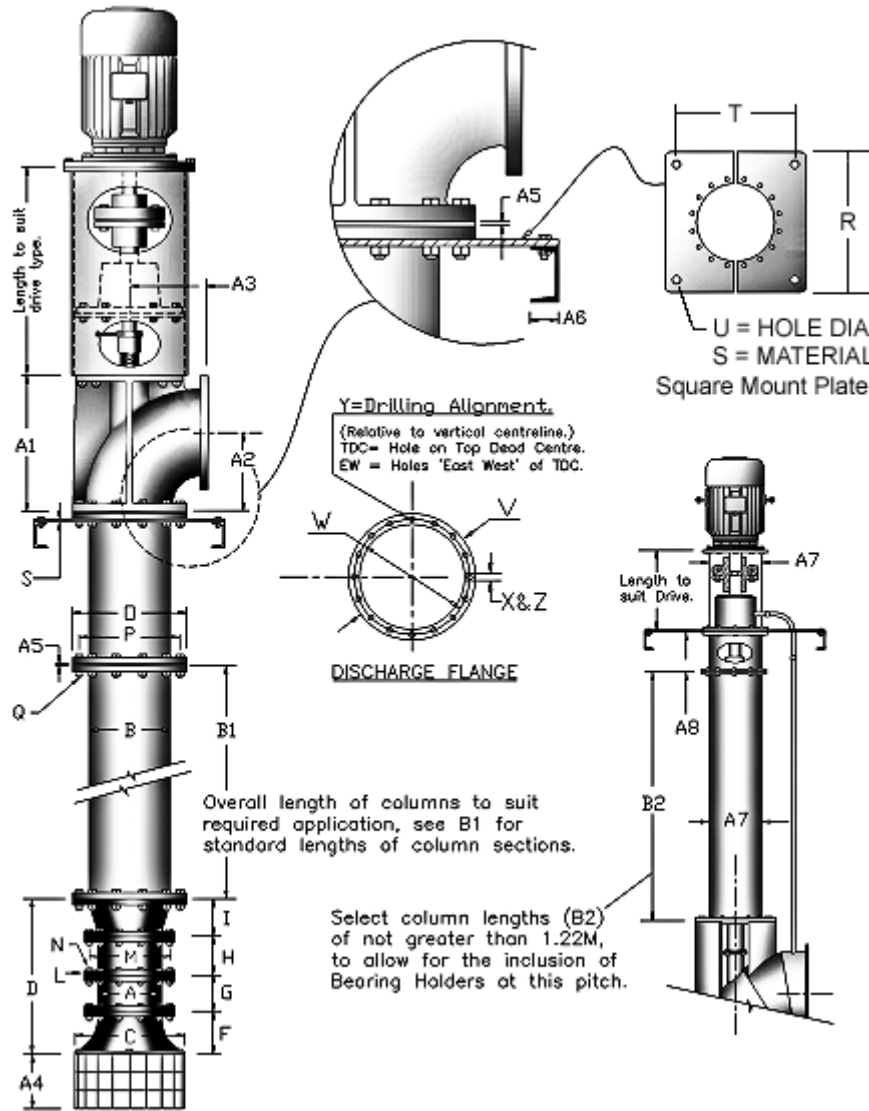
Note: On water lubricated pumps, the length of column sections (B1) is limited to 1.22 metres, to allow for inclusion of a Centre Bearing Holder (A5) between each flange. Bearings are required at each column flange, except the lowest, which is adjacent to the bottom assembly. If the topmost column section is shorter than 1.22 metres, a bearing will not be required under the Discharge Head.



ITEM			ITEM			ITEM		
mm			mm			mm		
A	Impeller Diameter	177.8	M	Stator Flange PCD	222.3	Y	Disch Bolts EW or TDC	(E-W)
B	Column Diameter	177.8	N	Stator Flange Hole Dia.	11.1	Z	Disch Flng No of Bolts	(8)
C	Bellmouth Diameter	292.1	O	Column Flange OD	241.3	A1	Head Height	317
D	1 Stage Length	314.3	P	Column Flange PCD	222.3	A2	Disch C/L Height	190
E	2 Stage Length	514.4	Q	Column Flange Hole Dia.	11.1	A3	Flng Face to Vert C/L	203
F	Bellmouth Length	114.3	R	Mount Plate Square	457.2	A4	Strainer Length	146
G	Running Ring Length	95.3	S	Mount Plate Thickness	12.7	A5	Centre Brg Holder Thkns	12.7
H	Stator Length	104.8	T	Mount Plate Hole Crs.	406.4	A6	Support Channel	50.8
I	Adaptor Length	-	U	Mount Plate Hole Dia.	17.5	A7	Drive Column Dia.	101.6
J	Impeller Shaft Length	812.8	V	Discharge Flange OD	241.3	A8	Extension Gland Stool	381
K	Impeller Shaft Diameter	31.8	W	Discharge Flange PCD	222.3			
L	Stator Flange Diameter	241.3	X	Disch Flng Hole Dia.	11.1		Head Casting Mtl	(CI)
B1	Column	Water Lube	300	600	900	1200		
		Oil Lube	300	600	900	1200	2400	
B2	Extended Drive Column	Water Lube	300	600	900	1200		
		Oil Lube	300	600	900	1200	2400	

7/9 Pump dimensions

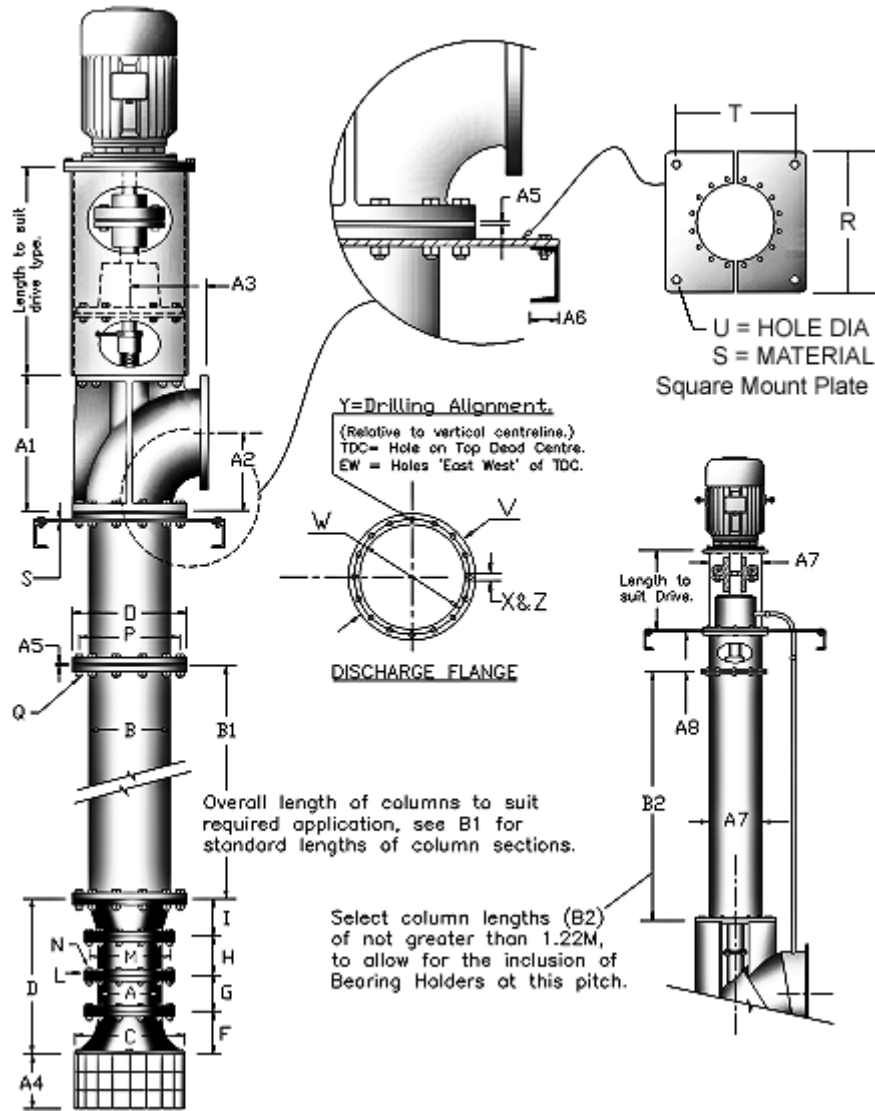
Note: On water lubricated pumps, the length of column sections (B1) is limited to 1.22 metres, to allow for inclusion of a Centre Bearing Holder (A5) between each flange. Bearings are required at each column flange, except the lowest, which is adjacent to the bottom assembly. If the topmost column section is shorter than 1.22 metres, a bearing will not be required under the Discharge Head.



ITEM			ITEM			ITEM		
mm			mm			mm		
A	Impeller Diameter	177.8	M	Stator Flange PCD	222.3	Y	Disch Bolts EW or TDC	(TDC)
B	Column Diameter	228.6	N	Stator Flange Hole Dia.	11.1	Z	Disch Flng No of Bolts	(8)
C	Bellmouth Diameter	292.1	O	Column Flange OD	304.8	A1	Head Height	406
D	1 Stage Length	415.9	P	Column Flange PCD	279.4	A2	Disch C/L Height	241
E	2 Stage Length	616	Q	Column Flange Hole Dia.	14.3	A3	Fng Face to Vert C/L	241
F	Bellmouth Length	114.3	R	Mount Plate Square	533.4	A4	Strainer Length	146
G	Running Ring Length	95.3	S	Mount Plate Thickness	12.7	A5	Centre Brg Holder Thkns	12.7
H	Stator Length	104.8	T	Mount Plate Hole Crs.	482.6	A6	Support Channel	50.8
I	Adaptor Length	101.6	U	Mount Plate Hole Dia.	17.5	A7	Drive Column Dia.	152.4
J	Impeller Shaft Length	812.8	V	Discharge Flange OD	304.8	A8	Extension Gland Stool	381
K	Impeller Shaft Diameter	31.8	W	Discharge Flange PCD	279.4			
L	Stator Flange Diameter	241.3	X	Disch Flng Hole Dia.	14.3		Head Casting Mtl	(CI)
B1	Column	Water Lube	300	600	900	1200		
		Oil Lube	300	600	900	1200	2400	
B2	Extended Drive Column	Water Lube	300	600	900	1200		
		Oil Lube	300	600	900	1200	2400	

9/9 Pump dimensions

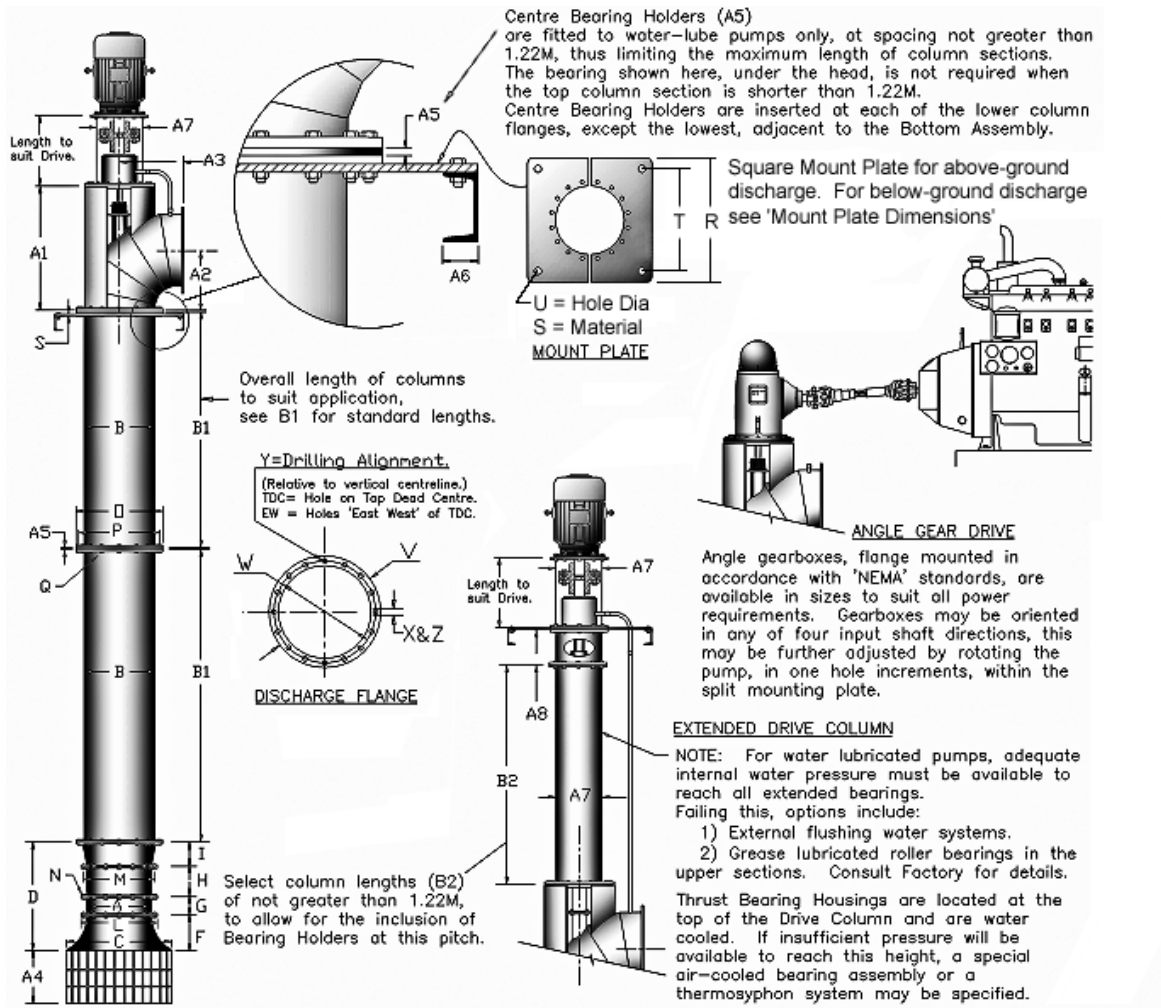
Note: On water lubricated pumps, the length of column sections (B1) is limited to 1.22 metres, to allow for inclusion of a Centre Bearing Holder (A5) between each flange. Bearings are required at each column flange, except the lowest, which is adjacent to the bottom assembly. If the topmost column section is shorter than 1.22 metres, a bearing will not be required under the Discharge Head.



ITEM			ITEM			ITEM		
mm			mm			mm		
A	Impeller Diameter	228.6	M	Stator Flange PCD	279.4	Y	Disch Bolts EW or TDC	(TDC)
B	Column Diameter	228.6	N	Stator Flange Hole Dia.	14.3	Z	Disch Flng No of Bolts	(8)
C	Bellmouth Diameter	381	O	Column Flange OD	304.8	A1	Head Height	406.4
D	1 Stage Length	262	P	Column Flange PCD	279.4	A2	Disch C/L Height	241.3
E	2 Stage Length	596.6	Q	Column Flange Hole Dia.	14.3	A3	Flng Face to Vert C/L	247.3
F	Bellmouth Length	127	R	Mount Plate Square	533.4	A4	Strainer Length	190
G	Running Ring Length	95.3	S	Mount Plate Thickness	12.7	A5	Centre Brg Holder Thkns	12.7
H	Stator Length	139.7	T	Mount Plate Hole Crs.	482.6	A6	Support Channel	50.8
I	Adaptor Length	-812.8	U	Mount Plate Hole Dia.	17.5	A7	Drive Column Dia.	152.4
J	Impeller Shaft Length	812.8	V	Discharge Flange OD	311.2	A8	Extension Gland Stool	381
K	Impeller Shaft Diameter	31.75	W	Discharge Flange PCD	279.4			
L	Stator Flange Diameter	304.8	X	Disch Flng Hole Dia.	14.3		Head Casting Mtl	(CI)
B1	Column	Water Lube	300	600	900	1200		
		Oil Lube	300	600	900	1200	2400	
B2	Extended Drive Column	Water Lube	300	600	900	1200		
		Oil Lube	300	600	900	1200	2400	

9/11 Pump dimensions

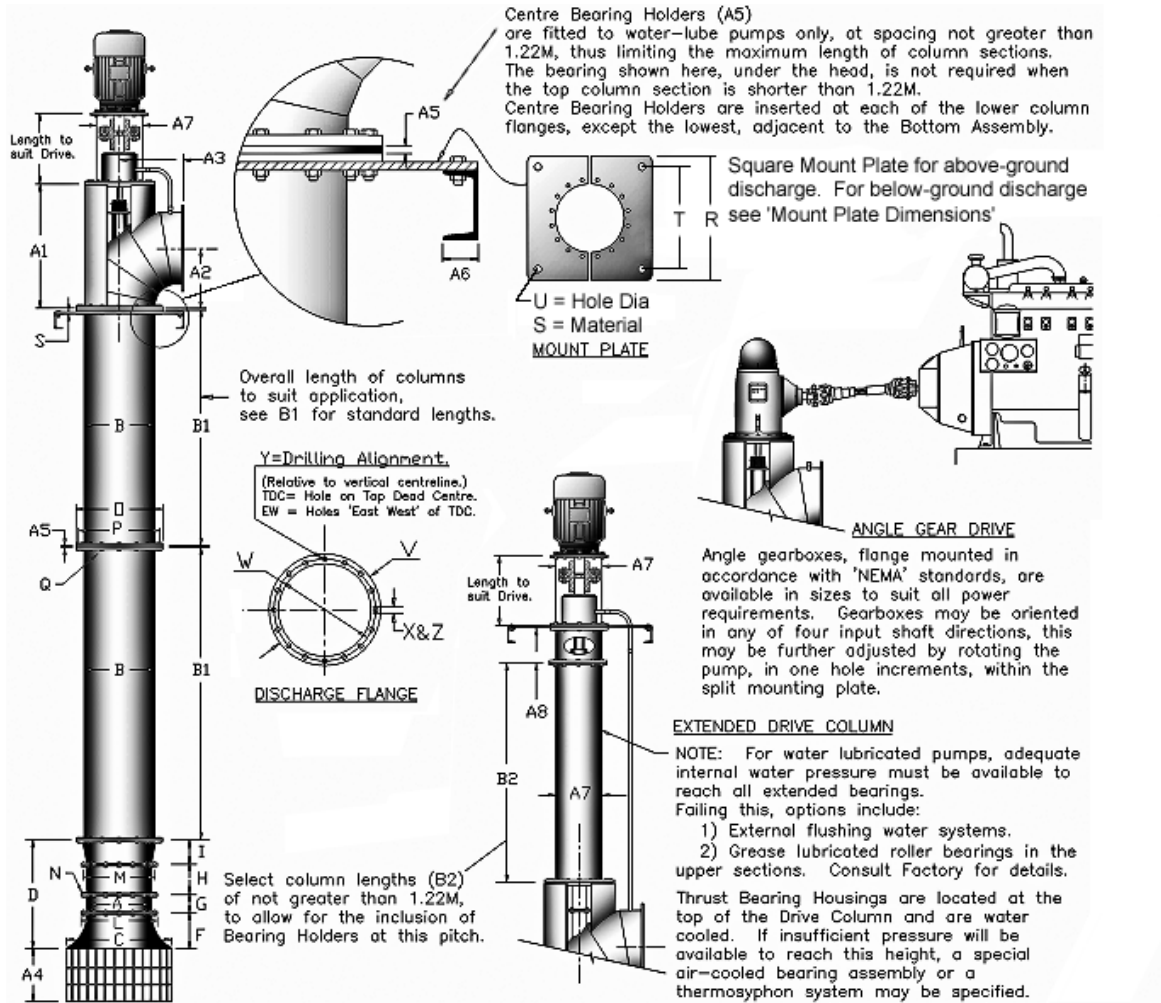
Note: On water lubricated pumps, the length of column sections (B1) is limited to 1.22 metres, to allow for inclusion of a Centre Bearing Holder (A5) between each flange. Bearings are required at each column flange, except the lowest, which is adjacent to the bottom assembly. If the topmost column section is shorter than 1.22 metres, a bearing will not be required under the Discharge Head.



ITEM	mm	ITEM	mm	ITEM	mm			
A	Impeller Diameter	228.6	M	Stator Flange PCD	279.4	Y	Disch Bolts EW or TDC	(TDC)
B	Column Diameter	279.4	N	Stator Flange Hole Dia.	14.3	Z	Disch Flng No of Bolts	(12)
C	Bellmouth Diameter	381	O	Column Flange OD	381	A1	Head Height	637
D	1 Stage Length	466.7	P	Column Flange PCD	346.1	A2	Disch C/L Height	279
E	2 Stage Length	701.7	Q	Column Flange Hole Dia.	14.3	A3	Flng Face to Vert C/L	279
F	Bellmouth Length	127	R	Mount Plate Square	609.6	A4	Strainer Length	191
G	Running Ring Length	95.3	S	Mount Plate Thickness	15.9	A5	Centre Brg Holder Thkns	12.7
H	Stator Length	139.7	T	Mount Plate Hole Crs.	533.4	A6	Support Channel	50.8
I	Adaptor Length	104.8	U	Mount Plate Hole Dia.	17.5	A7	Drive Column Dia.	177.8
J	Impeller Shaft Length	812.8	V	Discharge Flange OD	387.4	A8	Extension Gland Stool	381
K	Impeller Shaft Diameter	31.75	W	Discharge Flange PCD	346.1			
L	Stator Flange Diameter	304.8	X	Disch Flng Hole Dia.	14.3			
B1	Column	Water Lube	300	600	900	1200		
		Oil Lube	300	600	900	1200	2400	
B2	Extended Drive Column	Water Lube	300	600	900	1200		
		Oil Lube	300	600	900	1200	2400	

11/11 Pump dimensions

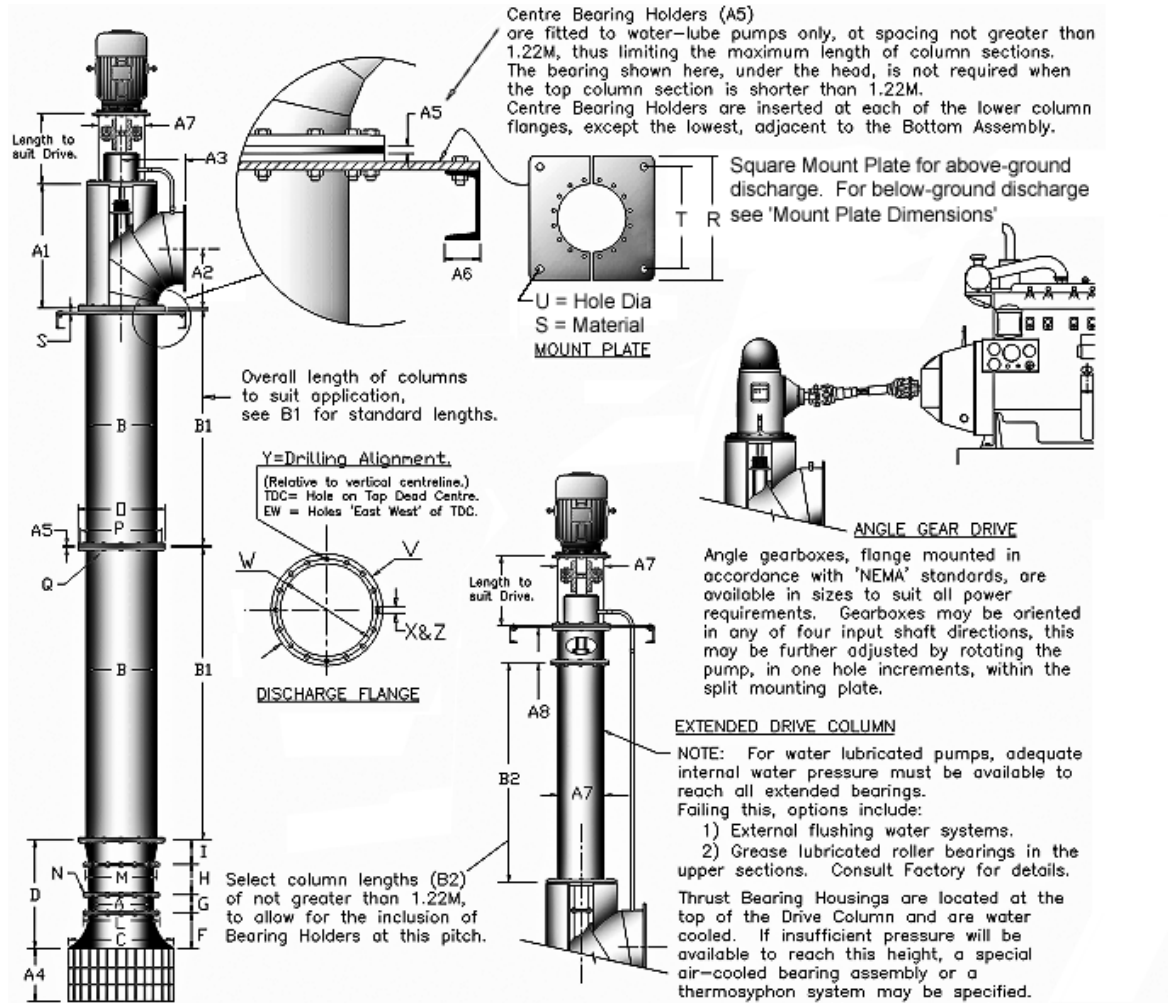
Note: On water lubricated pumps, the length of column sections (B1) is limited to 1.22 metres, to allow for inclusion of a Centre Bearing Holder (A5) between each flange. Bearings are required at each column flange, except the lowest, which is adjacent to the bottom assembly. If the topmost column section is shorter than 1.22 metres, a bearing will not be required under the Discharge Head.



ITEM	mm	ITEM	mm	ITEM	mm			
A	Impeller Diameter	279.4	M	Stator Flange PCD	346.1			
B	Column Diameter	279.4	N	Stator Flange Hole Dia.	14.3			
C	Bellmouth Diameter	457.2	O	Column Flange OD	381			
D	1 Stage Length	444.5	P	Column Flange PCD	346.1			
E	2 Stage Length	730.3	Q	Column Flange Hole Dia.	14.3			
F	Bellmouth Length	158.8	R	Mount Plate Square	609.6			
G	Running Ring Length	98.4	S	Mount Plate Thickness	15.9			
H	Stator Length	187.3	T	Mount Plate Hole Crs.	533.4			
I	Adaptor Length	-	U	Mount Plate Hole Dia.	17.5			
J	Impeller Shaft Length	812.8	V	Discharge Flange OD	387.4			
K	Impeller Shaft Diameter	38.1	W	Discharge Flange PCD	346.1			
L	Stator Flange Diameter	381	X	Disch Flng Hole Dia.	14.3			
B1	Column	Water Lube	300	600	900	1200		
		Oil Lube	300	600	900	1200	2400	
B2	Extended Drive Column	Water Lube	300	600	900	1200		
		Oil Lube	300	600	900	1200	2400	

11/14 Pump dimensions

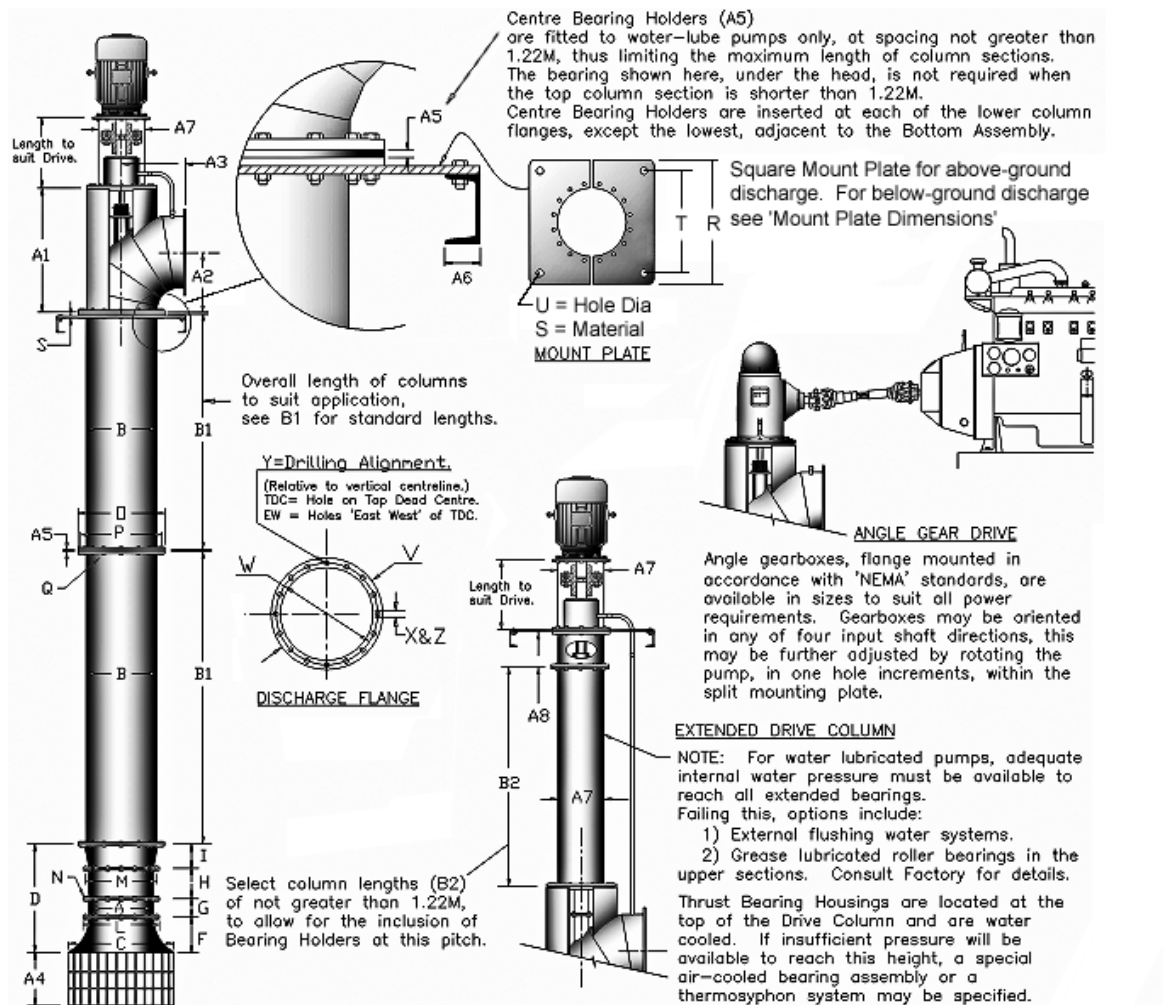
Note: On water lubricated pumps, the length of column sections (B1) is limited to 1.22 metres, to allow for inclusion of a Centre Bearing Holder (A5) between each flange. Bearings are required at each column flange, except the lowest, which is adjacent to the bottom assembly. If the topmost column section is shorter than 1.22 metres, a bearing will not be required under the Discharge Head.



ITEM	mm	ITEM	mm	ITEM	mm	
A	Impeller Diameter	279.4	M	Stator Flange PCD	346.1	
B	Column Diameter	355.6	N	Stator Flange Hole Dia.	14.3	
C	Bellmouth Diameter	457.2	O	Column Flange OD	457.3	
D	1 Stage Length	565.2	P	Column Flange PCD	419.1	
E	2 Stage Length	850.9	Q	Column Flng Hole Dia.	14.3	
F	Bellmouth Length	158.8	R	Mount Plate Square	762	
G	Running Ring Length	98.4	S	Mount Plate Thickness	15.9	
H	Stator Length	187.3	T	Mount Plate Hole Crs.	685.8	
I	Adaptor Length	120.7	U	Mount Plate Hole Dia.	17.5	
J	Impeller Shaft Length	812.8	V	Discharge Flange OD	463.6	
K	Impeller Shaft Diameter	38.1	W	Discharge Flange PCD	419.1	
L	Stator Flange Diameter	381	X	Dischg Flng Hole Dia.	14.3	
B1	Column	Water Lube	300	600	900	1200
		Oil Lube	300	600	900	1200
B2	Extended Drive Column	Water Lube	300	600	900	1200
		Oil Lube	300	600	900	1200

14/14 Pump dimensions

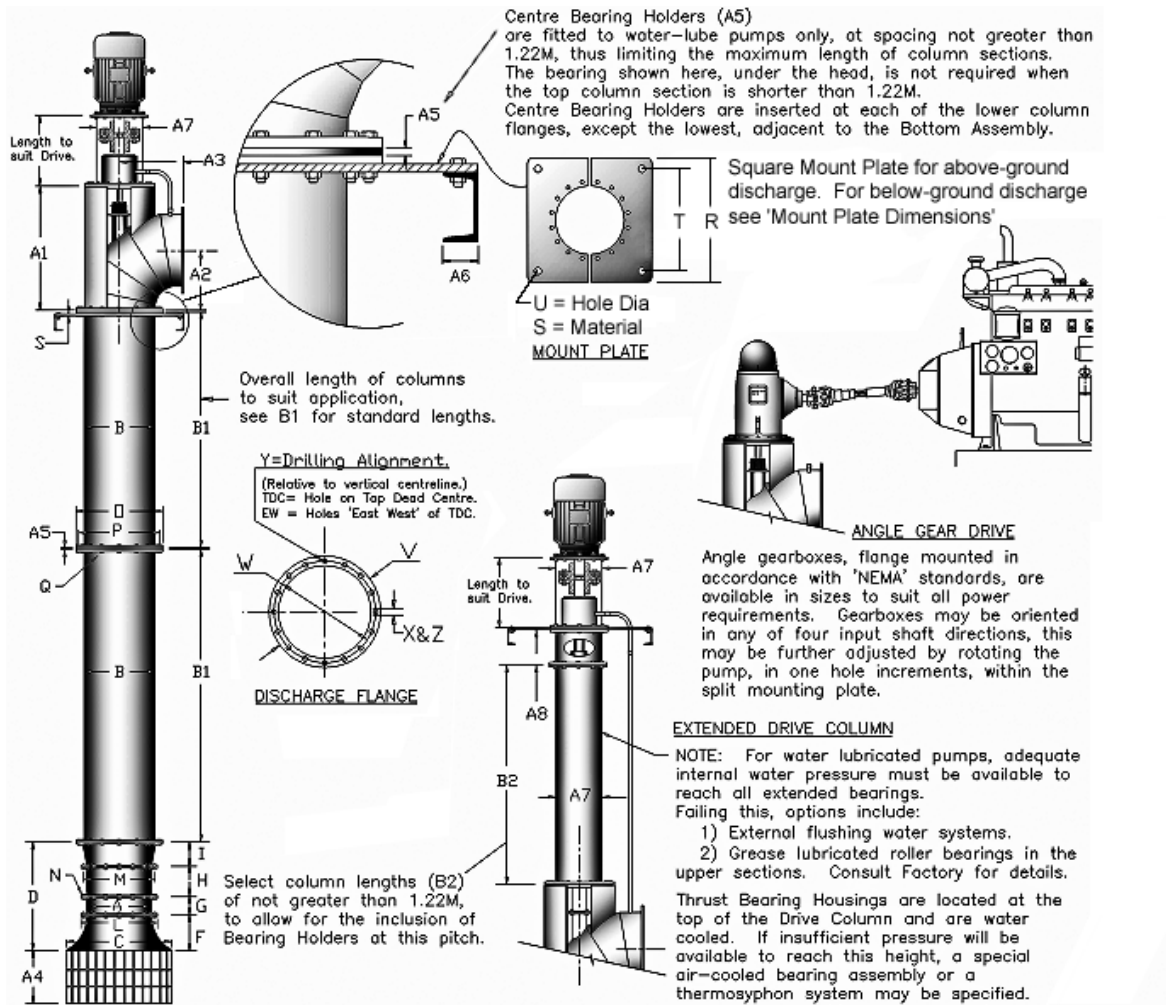
Note: On water lubricated pumps, the length of column sections (B1) is limited to 1.22 metres, to allow for inclusion of a Centre Bearing Holder (A5) between each flange. Bearings are required at each column flange, except the lowest, which is adjacent to the bottom assembly. If the topmost column section is shorter than 1.22 metres, a bearing will not be required under the Discharge Head.



ITEM			ITEM			ITEM		
mm			mm			mm		
A	Impeller Diameter	355.6	M	Stator Flange PCD	419.1	Y	Disch Bolts EW or TDC	(TDC)
B	Column Diameter	355.6	N	Stator Flange Hole Dia.	14.3	Z	Disch Flng No of Bolts	(12)
C	Bellmouth Diameter	609.6	O	Column Flange OD	457.2	A1	Head Height	705
D	1 Stage Length	466.7	P	Column Flange PCD	419.1	A2	Disch C/L Height	305
E	2 Stage Length	755.7	Q	Column Flange Hole Dia.	14.3	A3	Flng Face to Vert C/L	305
F	Bellmouth Length	190.6	R	Mount Plate Square	762	A4	Strainer Length	304.8
G	Running Ring Length	114.3	S	Mount Plate Thickness	15.9	A5	Centre Brg Holder Thkns	12.7
H	Stator Length	181	T	Mount Plate Hole Crs.	685.8	A6	Support Channel	63.5
I	Adaptor Length	-	U	Mount Plate Hole Dia.	17.5	A7	Drive Column Dia.	228.6
J	Impeller Shaft Length	812.8	V	Discharge Flange OD	463.6	A8	Extension Gland Stool	381
K	Impeller Shaft Diameter	38.1	W	Discharge Flange PCD	419.1			
L	Stator Flange Diameter	457.2	X	Disch Flng Hole Dia.	14.3			
B1	Column	Water Lube	300	600	900	1200		
		Oil Lube	300	600	900	1200	2400	
B2	Extended Drive Column	Water Lube	300	600	900	1200		
		Oil Lube	300	600	900	1200	2400	

14/16 Pump dimensions

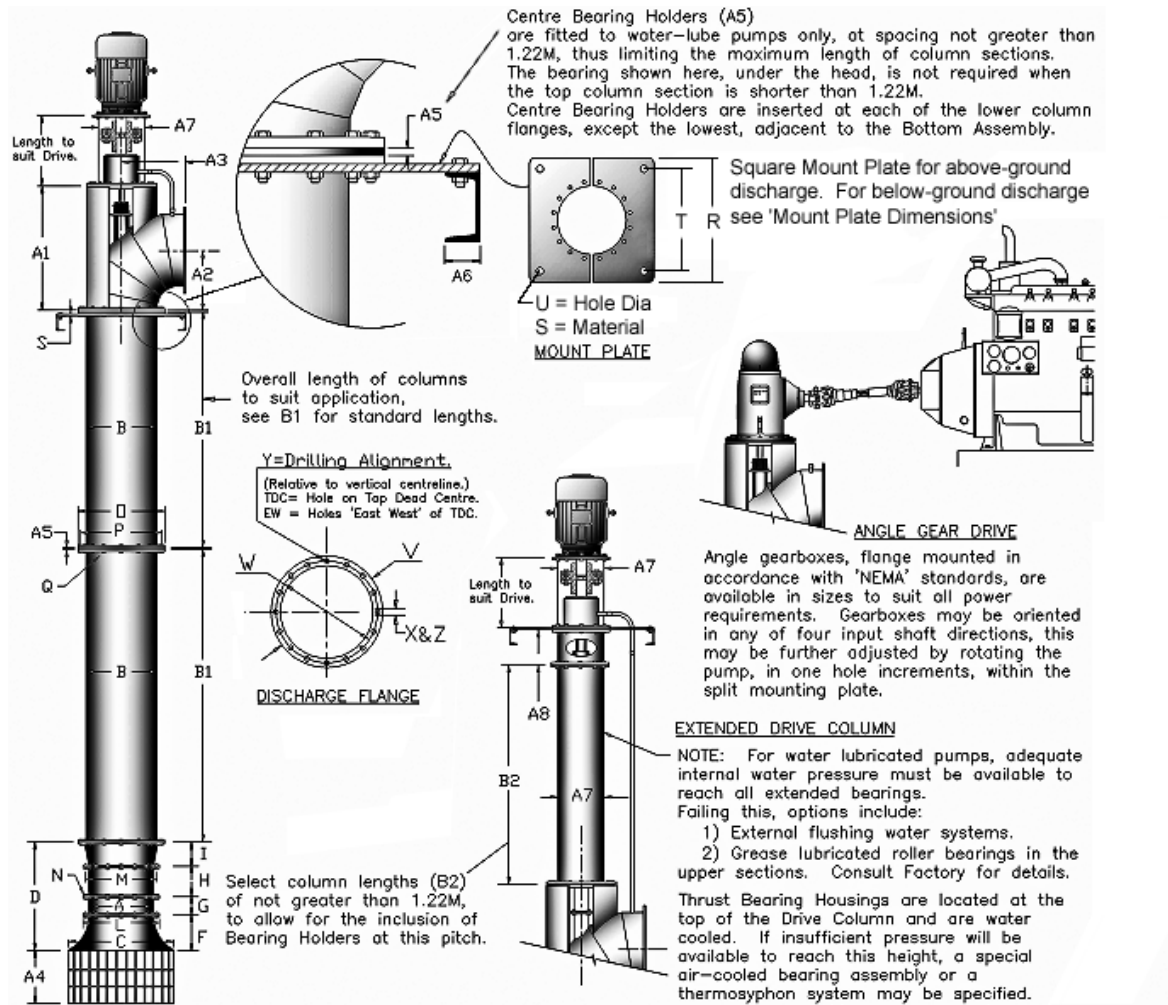
Note: On water lubricated pumps, the length of column sections (B1) is limited to 1.22 metres, to allow for inclusion of a Centre Bearing Holder (A5) between each flange. Bearings are required at each column flange, except the lowest, which is adjacent to the bottom assembly. If the topmost column section is shorter than 1.22 metres, a bearing will not be required under the Discharge Head.



ITEM	mm	ITEM	mm	ITEM	mm			
A	Impeller Diameter	355.6	M	Stator Flange PCD	419.1	Y	Disch Bolts EW or TDC	(TDC)
B	Column Diameter	406.4	N	Stator Flange Hole Dia.	14.3	Z	Disch Flng No of Bolts	(16)
C	Bellmouth Diameter	609.6	O	Column Flange OD	520.7	A1	Head Height	812.8
D	1 Stage Length	571.5	P	Column Flange PSD	479.4	A2	Disch C/L Height	400
E	2 Stage Length	860.4	Q	Column Flange Hole Dia.	14.3	A3	Flng Face to Vert C/L	394
F	Bellmouth Length	190.5	R	Mount Plate Square	762	A4	Strainer Length	304.8
G	Running Ring Length	114.3	S	Mount Plate Thickness	15.9	A5	Centre Brg Holder Thkns	12.7
H	Stator Length	181	T	Mount Plate Hole Crs.	685.8	A6	Support Channel	63.5
I	Adaptor Length	104.8	U	Mount Plate Hole Dia.	17.5	A7	Drive Column Dia.	279.4
J	Impeller Shaft Length	812.8	V	Discharge Flange OD	522.3	A8	Extension Gland Stool	381
K	Impeller Shaft Diameter	38.1	W	Discharge Flange PCD	479.4			
L	Stator Flange Diameter	457.2	X	Disch Flng Hole Dia.	14.3			
B1	Column	Water Lube	300	600	900	1200		
		Oil Lube	300	600	900	1200	2400	
B2	Extended Drive Column	Water Lube	300	600	900	1200		
		Oil Lube	300	600	900	1200	2400	

17/18 Pump dimensions

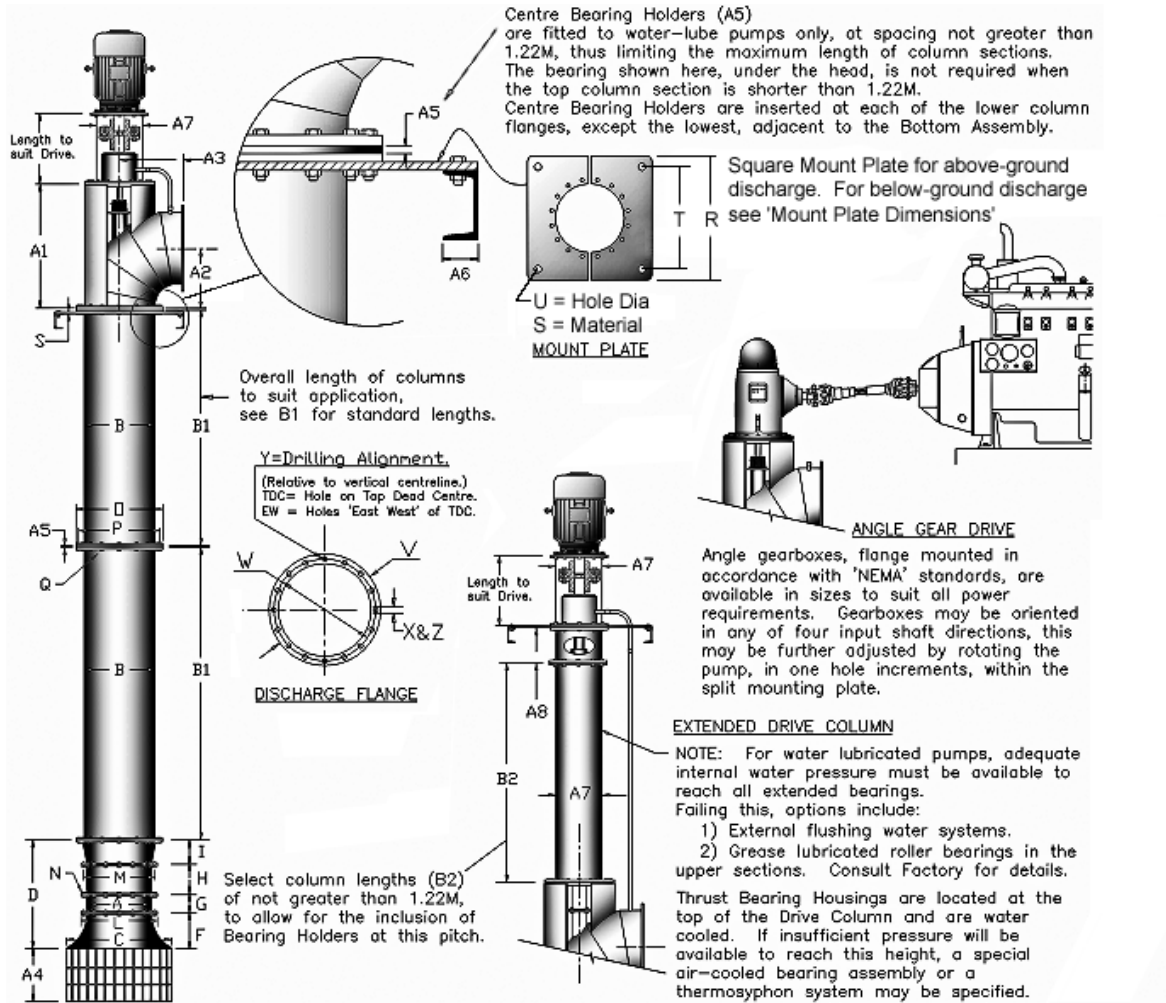
Note: On water lubricated pumps, the length of column sections (B1) is limited to 1.22 metres, to allow for inclusion of a Centre Bearing Holder (A5) between each flange. Bearings are required at each column flange, except the lowest, which is adjacent to the bottom assembly. If the topmost column section is shorter than 1.22 metres, a bearing will not be required under the Discharge Head.



ITEM	mm	ITEM	mm	ITEM	mm			
A	Impeller Diameter	431.8	M	Stator Flange PCD	495.3	Y	Disch Bolts EW or TDC	(TDC)
B	Column Diameter	457.2	N	Stator Flange Hole Dia.	17.5	Z	Disch Flng No of Bolts	(16)
C	Bellmouth Diameter	685.8	O	Column Flange OD	558.8	A1	Head Height	914
D	1 Stage Length	647	P	Column Flange PCD	508	A2	Disch C/L Height	406
E	2 Stage Length	934	Q	Column Flange Hole Dia.	17.5	A3	Flng Face to Vert C/L	403
F	Bellmouth Length	209.6	R	Mount Plate Square	914.4	A4	Strainer Length	343
G	Running Ring Length	104.8	S	Mount Plate Thickness	19.1	A5	Centre Brg Holder Thkns	15.9
H	Stator Length	182.6	T	Mount Plate Hole Crs.	838.2	A6	Support Channel	63.5
I	Adaptor Length	150	U	Mount Plate Hole Dia.	22.2	A7	Drive Column Dia.	355.6
J	Impeller Shaft Length	812.8	V	Discharge Flange OD	565.2	A8	Extension Gland Stool	381
K	Impeller Shaft Diameter	44.45	W	Discharge Flange PCD	508			
L	Stator Flange Diameter	533.4	X	Disch Flng Hole Dia.	17.5			
B1	Column	Water Lube	300	600	900	1200		
		Oil Lube	300	600	900	1200	2400	
B2	Extended Drive Column	Water Lube	300	600	900	1200		
		Oil Lube	300	600	900	1200	2400	

17/21 Pump dimensions

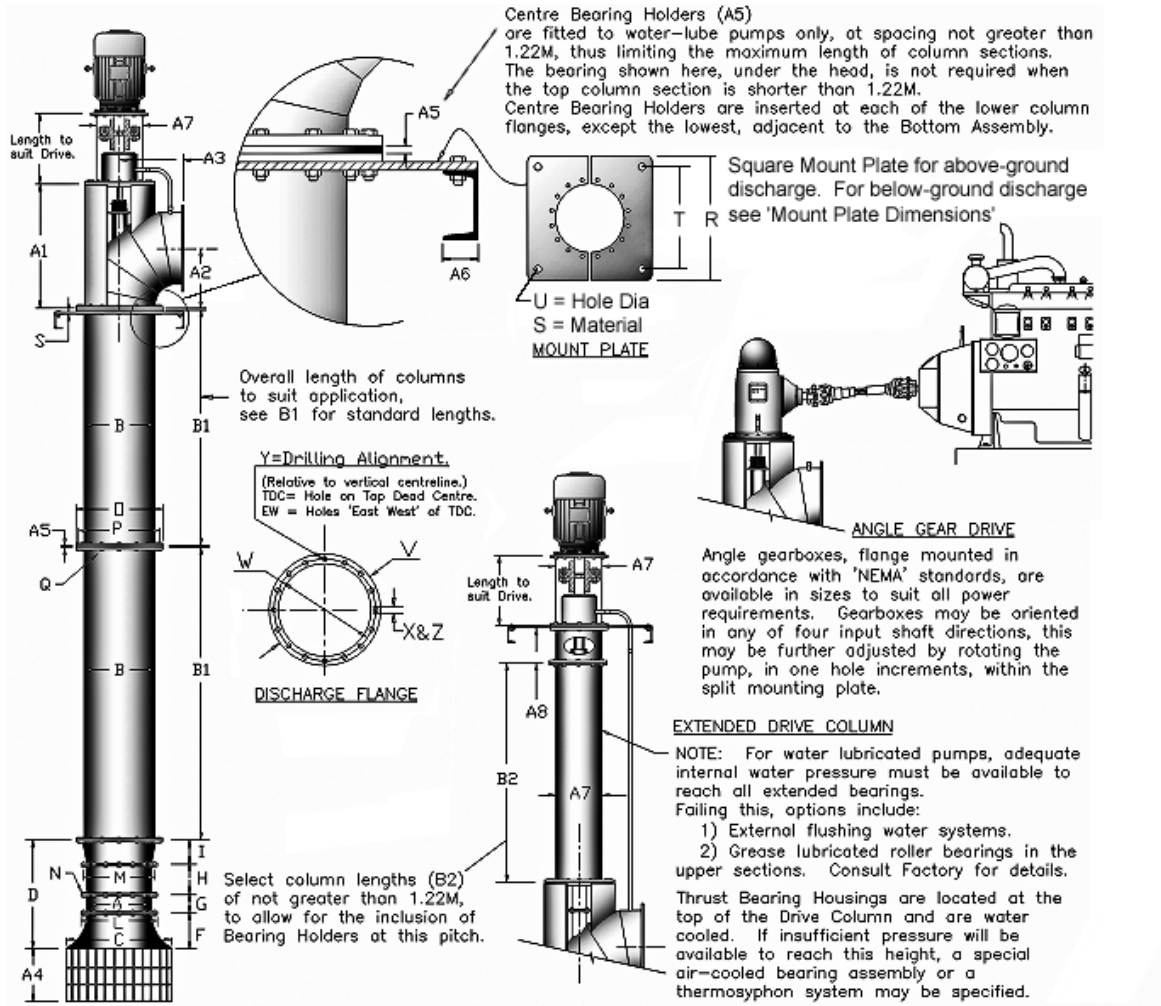
Note: On water lubricated pumps, the length of column sections (B1) is limited to 1.22 metres, to allow for inclusion of a Centre Bearing Holder (A5) between each flange. Bearings are required at each column flange, except the lowest, which is adjacent to the bottom assembly. If the topmost column section is shorter than 1.22 metres, a bearing will not be required under the Discharge Head.



ITEM	mm	ITEM	mm	ITEM	mm			
A	Impeller Diameter	431.8	M	Stator Flange PCD	495.3			
B	Column Diameter	533.4	N	Stator Flange Hole Dia.	17.5			
C	Bellmouth Diameter	685.8	O	Column Flange OD	635			
D	1 Stage Length	654	P	Column Flange PCD	590.6			
E	2 Stage Length	942	Q	Column Flange Hole Dia.	17.5			
F	Bellmouth Length	209.6	R	Mount Plate Square	838.2			
G	Running Ring Length	104.8	S	Mount Plate Thickness	19.1			
H	Stator Length	182.6	T	Mount Plate Hole Crs.	762			
I	Adaptor Length	152.7	U	Mount Plate Hole Dia.	22.2			
J	Impeller Shaft Length	812.8	V	Discharge Flange OD	642.9			
K	Impeller Shaft Diameter	44.45	W	Discharge Flange PCD	590.6			
L	Stator Flange Diameter	533.4	X	Disch Flng Hole Dia.	17.5			
B1	Column	Water Lube	300	600	900	1200		
		Oil Lube	300	600	900	1200	2400	
B2	Extended Drive Column	Water Lube	300	600	900	1200		
		Oil Lube	300	600	900	1200	2400	

21/21 Pump dimensions

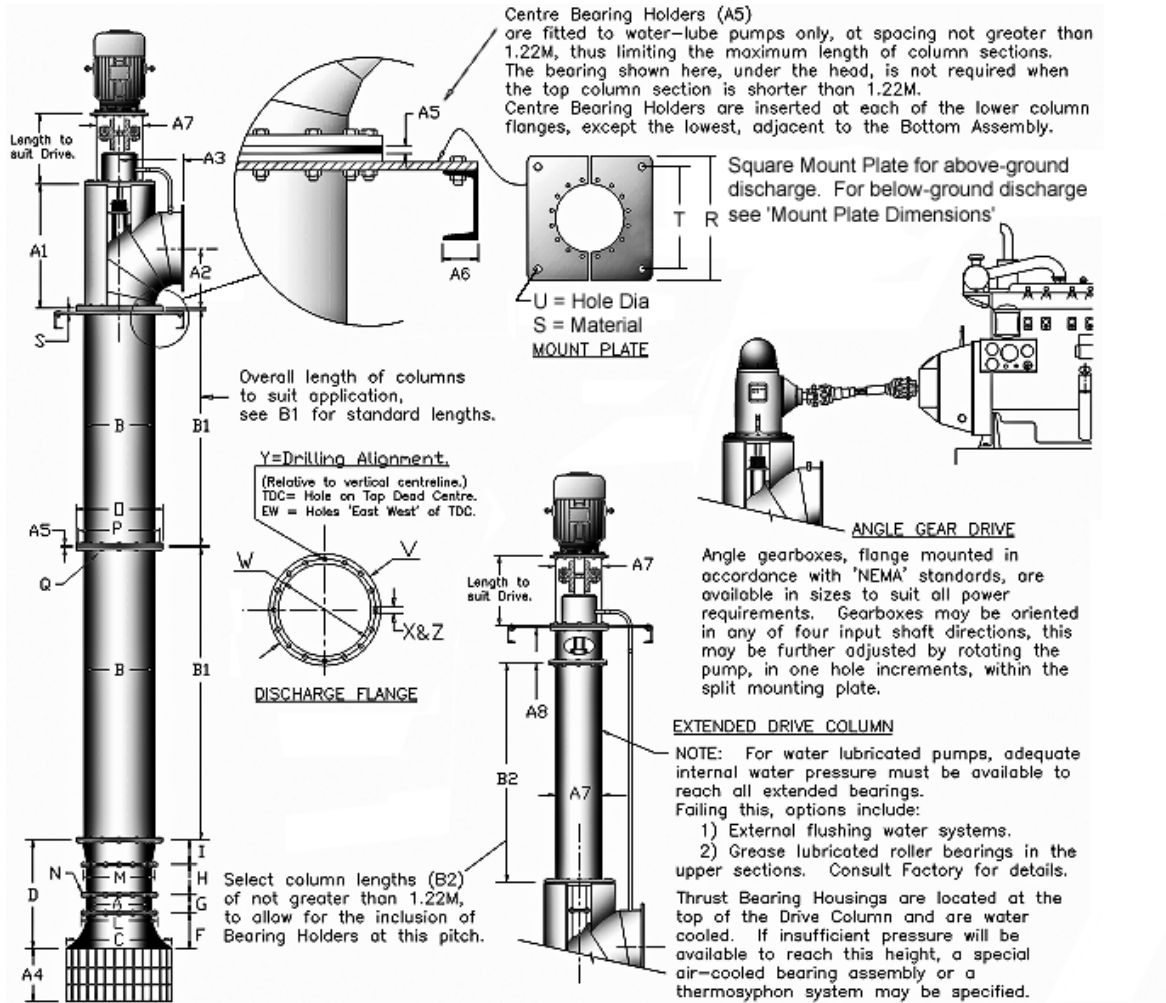
Note: On water lubricated pumps, the length of column sections (B1) is limited to 1.22 metres, to allow for inclusion of a Centre Bearing Holder (A5) between each flange. Bearings are required at each column flange, except the lowest, which is adjacent to the bottom assembly. If the topmost column section is shorter than 1.22 metres, a bearing will not be required under the Discharge Head.



ITEM	mm	ITEM	mm	ITEM	mm				
A	Impeller Diameter	533.4	M	Stator Flange PCD	622.3				
B	Column Diameter	533.4	N	Stator Flange Hole Dia.	22.2				
C	Bellmouth Diameter	914.4	O	Column Flange OD	635				
D	1 Stage Length	736.6	P	Column Flange PCD	590.6				
E	2 Stage Length	1158.9	Q	Column Flange Hole Dia.	17.5				
F	Bellmouth Length	317.5	R	Mount Plate Square	1066.8				
G	Running Ring Length	171.5	S	Mount Plate Thickness	19.1				
H	Stator Length	268.3	T	Mount Plate Hole Crs.	990.6				
I	Adaptor Length	-	U	Mount Plate Hole Dia.	22.2				
J	Impeller Shaft Length	1066.8	V	Discharge Flange OD	642.9				
K	Impeller Shaft Diameter	63.5	W	Discharge Flange PCD	590.6				
L	Stator Flange Diameter	673.1	X	Disch Fling Hole Dia.	17.5				
B1	Column	Water Lube	300	600	900	1200			
		Oil Lube	300	600	900	1200	2400		
B2	Extended Drive Column	Water Lube	300	600	900	1200			
		Oil Lube	300	600	900	1200	2400		

21/24 Pump dimensions

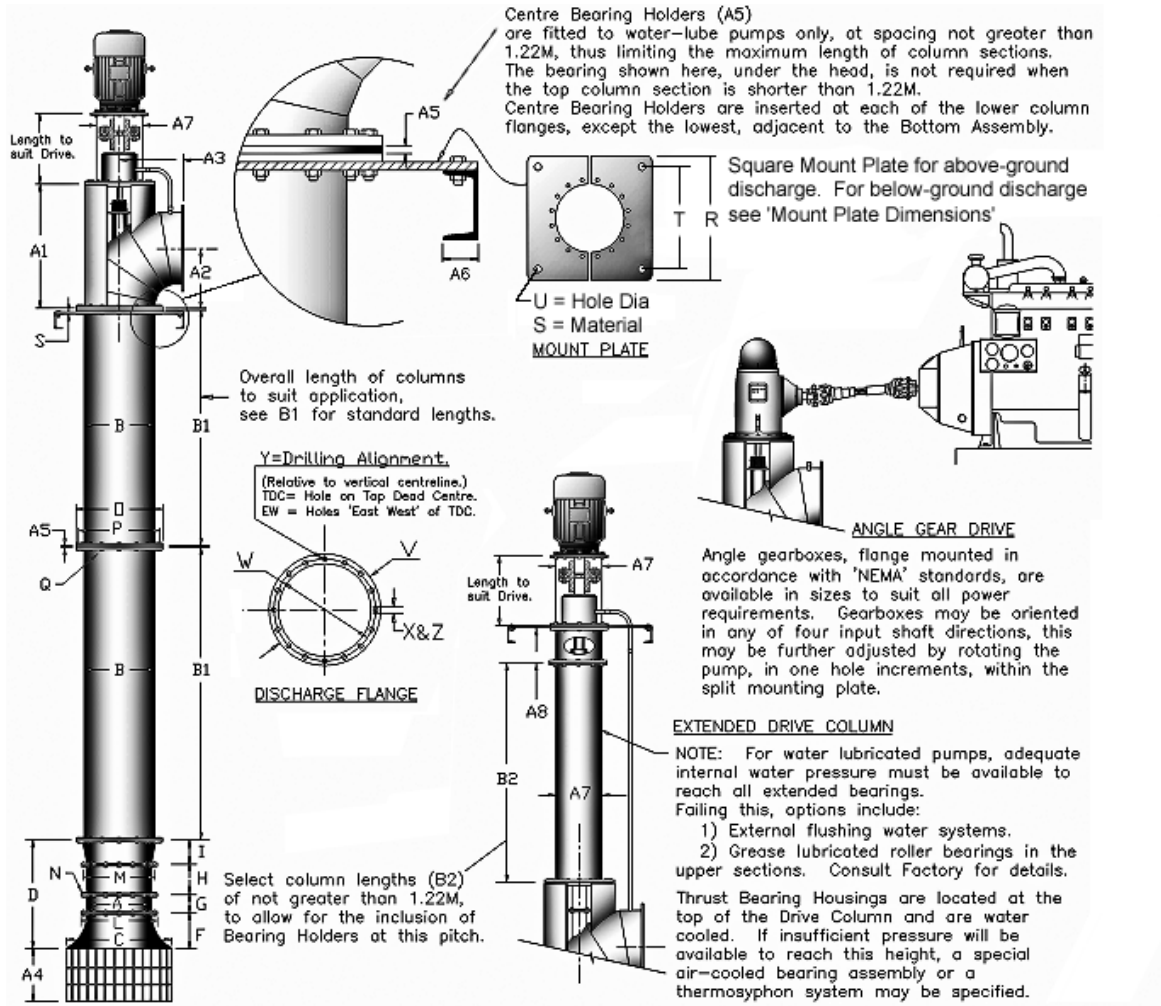
Note: On water lubricated pumps, the length of column sections (B1) is limited to 1.22 metres, to allow for inclusion of a Centre Bearing Holder (A5) between each flange. Bearings are required at each column flange, except the lowest, which is adjacent to the bottom assembly. If the topmost column section is shorter than 1.22 metres, a bearing will not be required under the Discharge Head.



ITEM	mm	ITEM	mm	ITEM	mm				
A	Impeller Diameter	533.4	M	Stator Flange PCD	622.3				
B	Column Diameter	609.6	N	Stator Flange Hole Dia.	22.2				
C	Bellmouth Diameter	914.4	O	Column Flange OD	736.6				
D	1 Stage Length	946.2	P	Column Flange PCD	692.2				
E	2 Stage Length	1368.4	Q	Column Flange Hole Dia.	22.2				
F	Bellmouth Length	317.5	R	Mount Plate Square	1066.8				
G	Running Ring Length	171.5	S	Mount Plate Thickness	19.1				
H	Stator Length	268.3	T	Mount Plate Hole Crs.	990.6				
I	Adaptor Length	209.6	U	Mount Plate Hole Dia.	22.2				
J	Impeller Shaft Length	1066.8	V	Discharge Flange OD	750.9				
K	Impeller Shaft Diameter	63.5	W	Discharge Flange PCD	692.2				
L	Stator Flange Diameter	673.1	X	Disch Flng Hole Dia.	22.2				
B1	Column	Water Lube	300	600	900	1200			
		Oil Lube	300	600	900	1200	2400		
B2	Extended Drive Column	Water Lube	300	600	900	1200			
		Oil Lube	300	600	900	1200	2400		

24/24 Pump dimensions

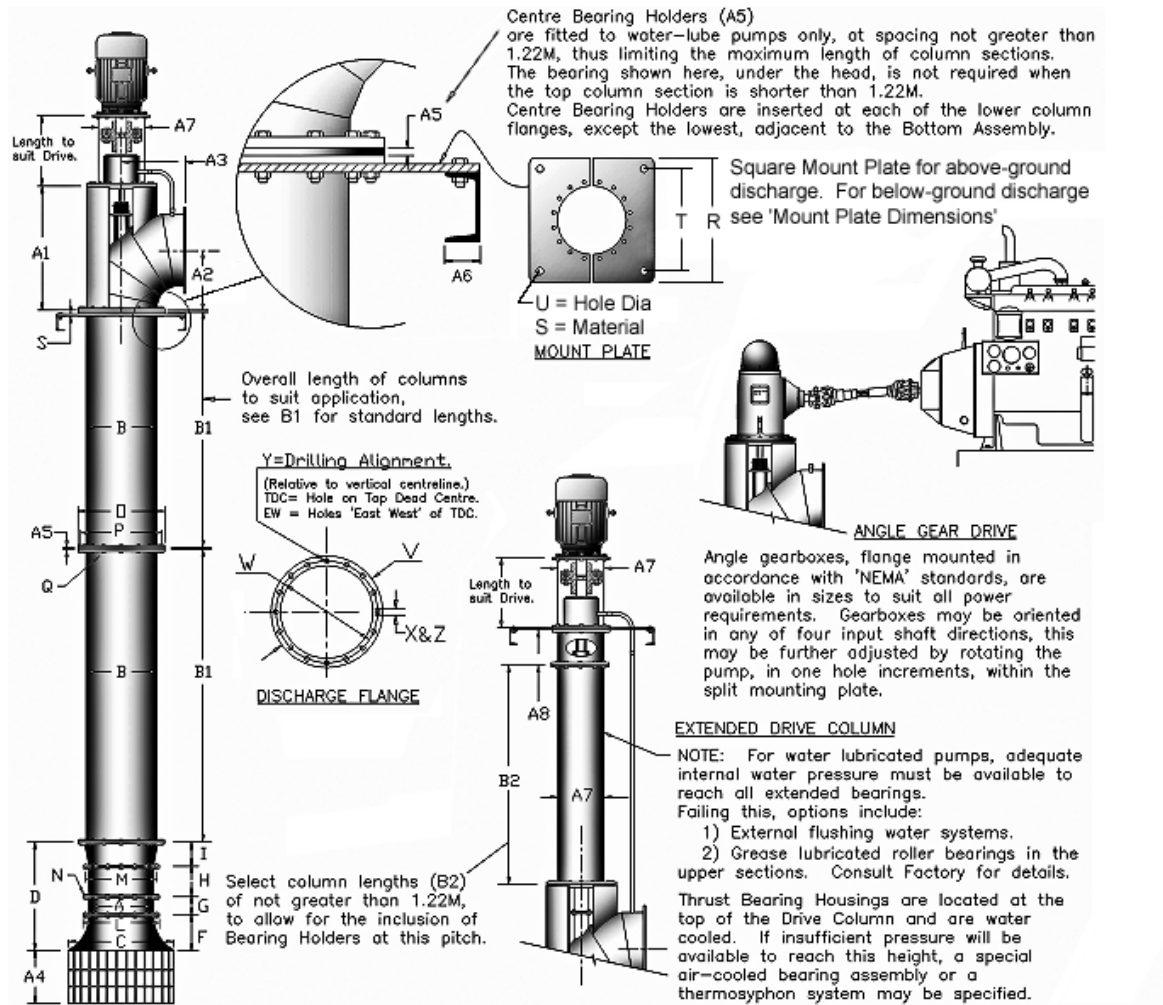
Note: On water lubricated pumps, the length of column sections (B1) is limited to 1.22 metres, to allow for inclusion of a Centre Bearing Holder (A5) between each flange. Bearings are required at each column flange, except the lowest, which is adjacent to the bottom assembly. If the topmost column section is shorter than 1.22 metres, a bearing will not be required under the Discharge Head.



ITEM	mm	ITEM	mm	ITEM	mm			
A	Impeller Diameter	609.6	M	Stator Flange PCD	711.2	Y	Disch Bolts EW or TDC	(TDC)
B	Column Diameter	609.6	N	Stator Flange Hole Dia.	22.2	Z	Disch Flng No of Bolts	(16)
C	Bellmouth Diameter	1066.8	O	Column Flange OD	736.6	A1	Head Height	1143
D	1 Stage Length	825.5	P	Column Flange PCD	692.2	A2	Disch C/L Height	533
E	2 Stage Length	1320.8	Q	Column Flange Hole Dia.	22.2	A3	Fng Face to Vert C/L	521
F	Bellmouth Length	330.2	R	Mount Plate Square	1219.2	A4	Strainer Length	533
G	Running Ring Length	196.9	S	Mount Plate Thickness	19.1	A5	Centre Brg Holder Thkns	19.1
H	Stator Length	298.5	T	Mount Plate Hole Crs.	1143	A6	Support Channel	63.5
I	Adaptor Length	-	U	Mount Plate Hole Dia.	22.2	A7	Drive Column Dia.	355.6
J	Impeller Shaft Length	1130.3	V	Discharge Flange OD	750.9	A8	Extension Gland Stool	381
K	Impeller Shaft Diameter	76.2	W	Discharge Flange PCD	692.2			
L	Stator Flange Diameter	762	X	Disch Flng Hole Dia.	22.2			
B1	Column	Water Lube	300	600	900	1200		
		Oil Lube	300	600	900	1200	2400	
B2	Extended Drive Column	Water Lube	300	600	900	1200		
		Oil Lube	300	600	900	1200	2400	

24/30 Pump dimensions

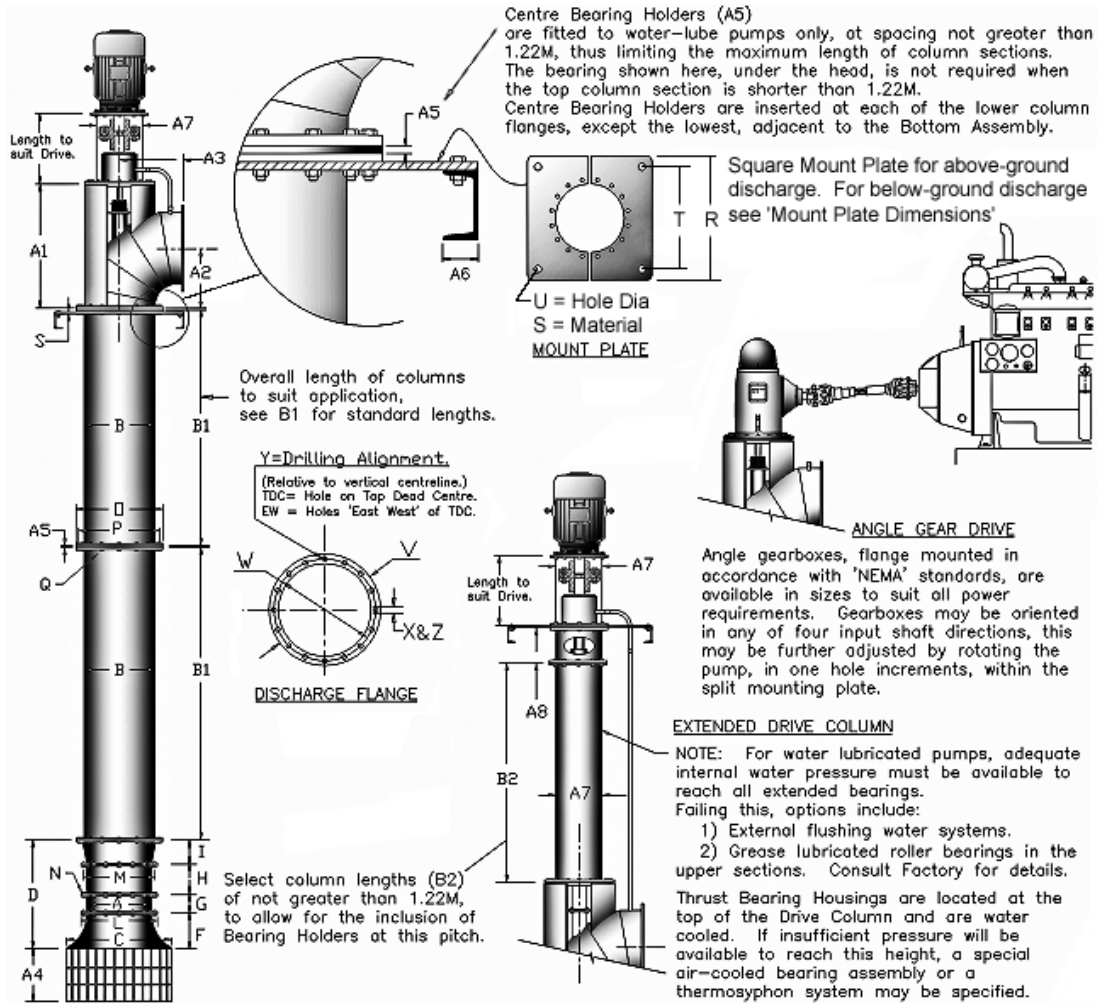
Note: On water lubricated pumps, the length of column sections (B1) is limited to 1.22 metres, to allow for inclusion of a Centre Bearing Holder (A5) between each flange. Bearings are required at each column flange, except the lowest, which is adjacent to the bottom assembly. If the topmost column section is shorter than 1.22 metres, a bearing will not be required under the Discharge Head.



ITEM	mm	ITEM	mm	ITEM	mm			
A	Impeller Diameter	609.6	M	Stator Flange PCD	711.2	Y	Disch Bolts EW or TDC	(TDC)
B	Column Diameter	762	N	Stator Flange Hole Dia.	22.2	Z	Disch Flng No of Bolts	(20)
C	Bellmouth Diameter	1066.8	O	Column Flange OD	876.3	A1	Head Height	1327
D	1 Stage Length	1085.9	P	Column Flange PCD	838.2	A2	Disch C/L Height	572
E	2 Stage Length	1581.2	Q	Column Flange Hole Dia.	22.2	A3	Flng Face to Vert C/L	648
F	Bellmouth Length	330.2	R	Mount Plate Square	1219.2	A4	Strainer Length	566
G	Running Ring Length	196.9	S	Mount Plate Thickness	25.4	A5	Centre Brg Holder Thkns	19.1
H	Stator Length	298.5	T	Mount Plate Hole Crs.	1143	A6	Support Channel	63.5
I	Adaptor Length	260.4	U	Mount Plate Hole Dia.	22.2	A7	Drive Column Dia.	355.6
J	Impeller Shaft Length	1130.3	V	Discharge Flange OD	896.9	A8	Extension Gland Stool	381
K	Impeller Shaft Diameter	76.2	W	Discharge Flange PCD	838.2			
L	Stator Flange Diameter	762	X	Disch Flng Hole Dia.	22.2			
B1	Column	Water Lube	300	600	900	1200		
		Oil Lube	300	600	900	1200	2400	
B2	Extended Drive Column	Water Lube	300	600	900	1200		
		Oil Lube	300	600	900	1200	2400	

32/36 Pump dimensions

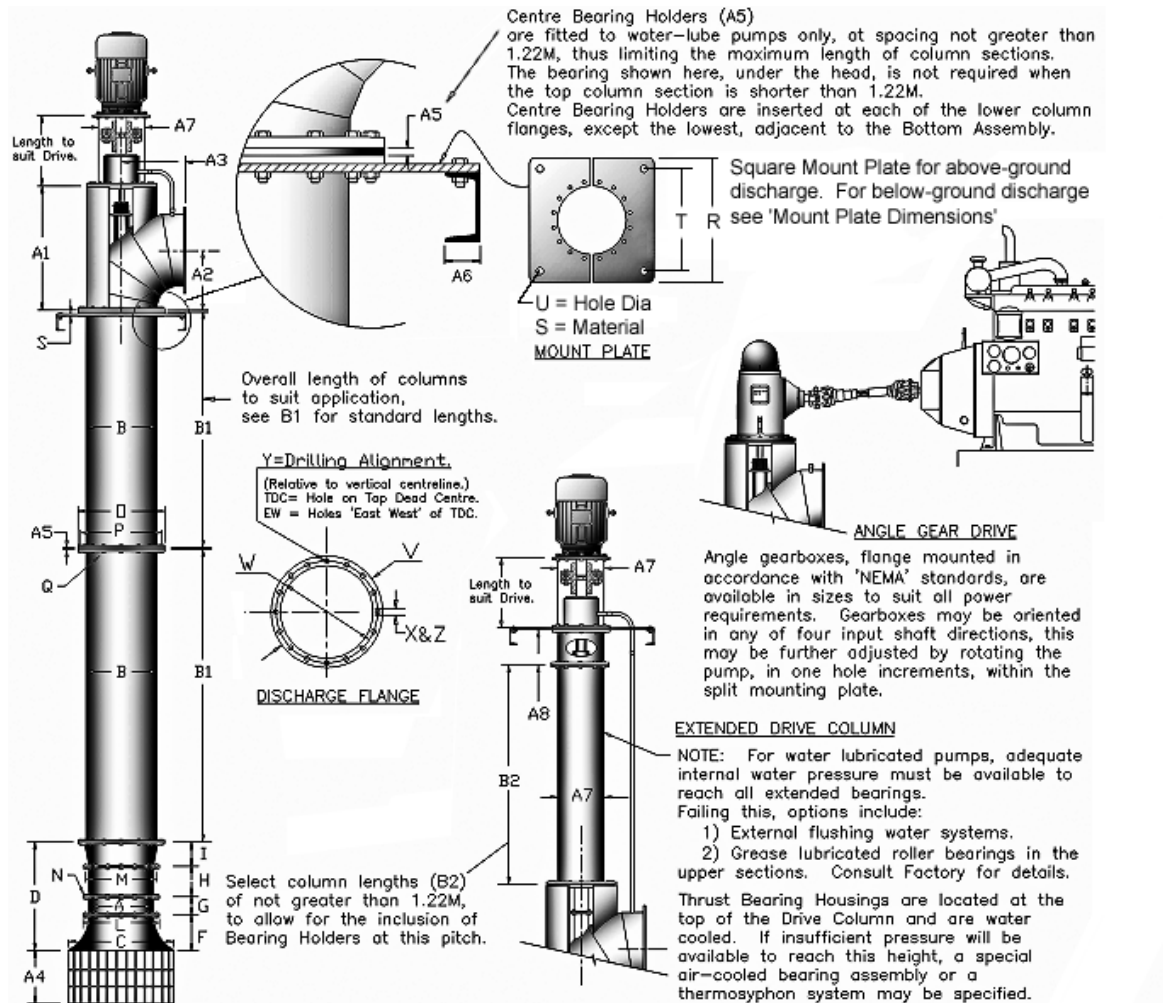
Note: On water lubricated pumps, the length of column sections (B1) is limited to 1.22 metres, to allow for inclusion of a Centre Bearing Holder (A5) between each flange. Bearings are required at each column flange, except the lowest, which is adjacent to the bottom assembly. If the topmost column section is shorter than 1.22 metres, a bearing will not be required under the Discharge Head.



ITEM	mm	ITEM	mm	ITEM	mm			
A	Impeller Diameter	812.8	M	Stator Flange PCD	914.4	Y	Disch Bolts EW or TDC	(TDC)
B	Column Diameter	914.4	N	Stator Flange Hole Dia.	27	Z	Disch Flng No of Bolts	(20)
C	Bellmouth Diameter	1295.4	O	Column Flange OD	1054.1	A1	Head Height	1524
D	1 Stage Length	1955.8	P	Column Flange PCD	1003.3	A2	Disch C/L Height	787
E	2 Stage Length	2768.6	Q	Column Flange Hole Dia.	28.6	A3	Fln Face to Vert C/L	762
F	Bellmouth Length	457.2	R	Mount Plate Square	1524	A4	Strainer Length	648
G	Running Ring Length	355.6	S	Mount Plate Thickness	31.8	A5	Centre Brg Holder Thkns	24
H	Stator Length	457.2	T	Mount Plate Hole Crs.	1422.4	A6	Support Channel	76.2
I	Adaptor Length	381	U	Mount Plate Hole Dia.	28.6	A7	Drive Column Dia.	508
J	Impeller Shaft Length	1500	V	Discharge Flange OD	1074.7	A8	Extension Gland Stool	600
K	Impeller Shaft Diameter	101.6	W	Discharge Flange PCD	1003.3			
L	Stator Flange Diameter	984.3	X	Disch Flng Hole Dia.	28.6			
B1	Column	Water Lube	300	600	900	1200		
		Oil Lube	300	600	900	1200	2400	
B2	Extended Drive Column	Water Lube	300	600	900	1200		
		Oil Lube	300	600	900	1200	2400	

32/42 Pump dimensions

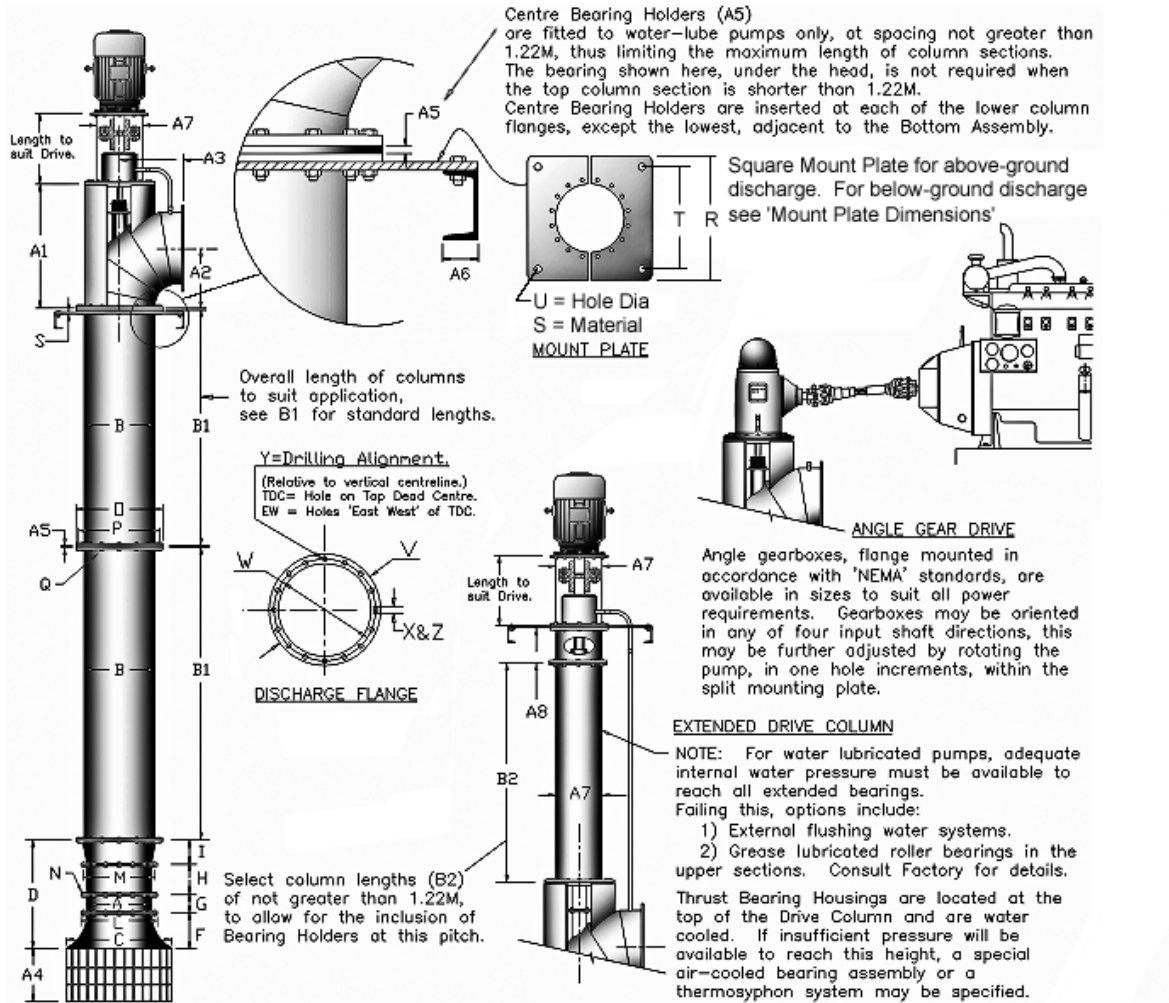
Note: On water lubricated pumps, the length of column sections (B1) is limited to 1.22 metres, to allow for inclusion of a Centre Bearing Holder (A5) between each flange. Bearings are required at each column flange, except the lowest, which is adjacent to the bottom assembly. If the topmost column section is shorter than 1.22 metres, a bearing will not be required under the Discharge Head.



ITEM	mm	ITEM	mm	ITEM	mm			
A	Impeller Diameter	812.8	M	Stator Flange PCD	914.4			
B	Column Diameter	1066.8	N	Stator Flange Hole Dia.	27			
C	Bellmouth Diameter	1295.4	O	Column Flange OD	1213			
D	1 Stage Length	2116.8	P	Column Flange PCD	1162.1			
E	2 Stage Length	2918.6	Q	Column Flange Hole Dia.	28.6			
F	Bellmouth Length	457.2	R	Mount Plate Square	1759			
G	Running Ring Length	355.6	S	Mount Plate Thickness	38.1			
H	Stator Length	457.2	T	Mount Plate Hole Crs.	1657			
I	Adaptor Length	381	U	Mount Plate Hole Dia.	31.8			
J	Impeller Shaft Length	1500	V	Discharge Flange OD	1227.1			
K	Impeller Shaft Diameter	101.6	W	Discharge Flange PCD	1162.1			
L	Stator Flange Diameter	984	X	Disch Flng Hole Dia.	28.6			
B1	Column	Water Lube	300	600	900	1200		
		Oil Lube	300	600	900	1200	2400	
B2	Extended Drive Column	Water Lube	300	600	900	1200		
		Oil Lube	300	600	900	1200	2400	

32/48 Pump dimensions

Note: On water lubricated pumps, the length of column sections (B1) is limited to 1.22 metres, to allow for inclusion of a Centre Bearing Holder (A5) between each flange. Bearings are required at each column flange, except the lowest, which is adjacent to the bottom assembly. If the topmost column section is shorter than 1.22 metres, a bearing will not be required under the Discharge Head.



ITEM	mm	ITEM	mm	ITEM	mm			
A	Impeller Diameter	812.8	M	Stator Flange PCD	914.4			
B	Column Diameter	1219.2	N	Stator Flange Hole Dia.	27			
C	Bellmouth Diameter	1295.4	O	Column Flange OD	1490			
D	1 Stage Length	2116.8	P	Column Flange PCD	1410			
E	2 Stage Length	2918.6	Q	Column Flange Hole Dia.	28.6			
F	Bellmouth Length	457.2	R	Mount Plate Square	1759			
G	Running Ring Length	355.6	S	Mount Plate Thickness	31.8			
H	Stator Length	457.2	T	Mount Plate Hole Crs.	1657			
I	Adaptor Length	602	U	Mount Plate Hole Dia.	31.8			
J	Impeller Shaft Length	1500	V	Discharge Flange OD	1490			
K	Impeller Shaft Diameter	101.6	W	Discharge Flange PCD	1410			
L	Stator Flange Diameter		X	Disch Flng Hole Dia.	28.6			
B1	Column	Water Lube	300	600	900	1200		
		Oil Lube	300	600	900	1200	2400	
B2	Extended Drive Column	Water Lube	300	600	900	1200		
		Oil Lube	300	600	914	1200	2400	